



MDGA2 rabbit pAb

Cat No.:ES14988

For research use only

Overview

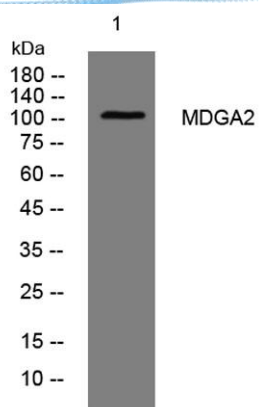
Product Name	MDGA2 rabbit pAb
Host species	Rabbit
Applications	WB
Species Cross-Reactivity	Human; Mouse;Rat
Recommended dilutions	WB 1:500-2000
Immunogen	Synthesized peptide derived from human MDGA2 AA range: 726-776
Specificity	This antibody detects endogenous levels of MDGA2 at Human/Mouse/Rat
Formulation	Liquid in PBS containing 50% glycerol, 0.5% BSA and 0.02% sodium azide.
Storage	Store at -20°C. Avoid repeated freeze-thaw cycles.
Protein Name	MDGA2
Gene Name	MDGA2 MAMDC1 UNQ8188/PRO23197
Cellular localization	Cell membrane ; Lipid-anchor, GPI-anchor .
Purification	The antibody was affinity-purified from rabbit antiserum by affinity-chromatography using epitope-specific immunogen.
Clonality	Polyclonal
Concentration	1 mg/ml
Observed band	105kD
Human Gene ID	161357
Human Swiss-Prot Number	Q7Z553
Alternative Names	MAM domain-containing glycosylphosphatidylinositol anchor protein 2 (MAM domain-containing protein 1)

Background





ELK Biotechnology



Western blot analysis of lysates from U2OS cells, primary antibody was diluted at 1:1000, 4° over night



+86-27-59760950

ELKbio@ELKbiotech.com

www.elkbiotech.com

23-2, No.388 Gaoxin 2nd Road, Wuhan East Lake Hi-tech Development Zone, Hubei, P.R.C