



eEF2K (phospho Ser366) rabbit pAb

Cat No.:ES1470

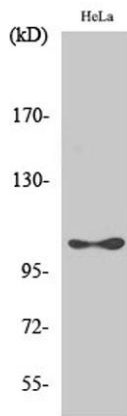
For research use only

Overview

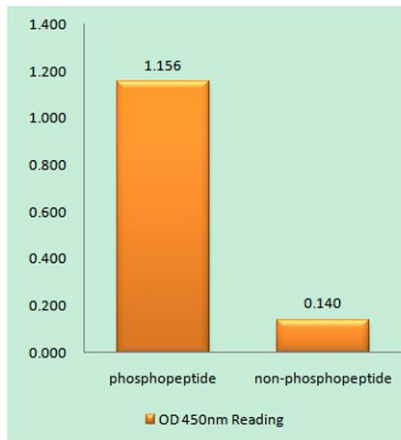
Product Name	eEF2K (phospho Ser366) rabbit pAb
Host species	Rabbit
Applications	WB;IHC;IF;ELISA
Species Cross-Reactivity	Human;Rat
Recommended dilutions	Western Blot: 1/500 - 1/2000. Immunohistochemistry: 1/100 - 1/300. ELISA: 1/40000. Not yet tested in other applications.
Immunogen	The antiserum was produced against synthesized peptide derived from human eEF2K around the phosphorylation site of Ser366. AA range:331-380
Specificity	Phospho-eEF2K (S366) Polyclonal Antibody detects endogenous levels of eEF2K protein only when phosphorylated at S366.
Formulation	Liquid in PBS containing 50% glycerol, 0.5% BSA and 0.02% sodium azide.
Storage	Store at -20°C. Avoid repeated freeze-thaw cycles.
Protein Name	Eukaryotic elongation factor 2 kinase
Gene Name	EEF2K
Cellular localization	cytoplasm,cytosol,postsynaptic density,
Purification	The antibody was affinity-purified from rabbit antiserum by affinity-chromatography using epitope-specific immunogen.
Clonality	Polyclonal
Concentration	1 mg/ml
Observed band	105kD
Human Gene ID	29904
Human Swiss-Prot Number	O00418
Alternative Names	EEF2K; Eukaryotic elongation factor 2 kinase; eEF-2 kinase; eEF-2K; Calcium/calmodulin-dependent eukaryotic elongation factor 2 kinase
Background	This gene encodes a highly conserved protein kinase in the calmodulin-mediated signaling pathway that links activation of cell surface receptors to cell



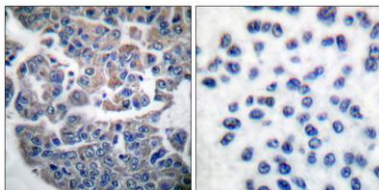
division. This kinase is involved in the regulation of protein synthesis. It phosphorylates eukaryotic elongation factor 2 (EEF2) and thus inhibits the EEF2 function. The activity of this kinase is increased in many cancers and may be a valid target for anti-cancer treatment. [provided by RefSeq, Jul 2008],



Western Blot analysis of various cells using Phospho-eEF2K (S366) Polyclonal Antibody diluted at 1:1000



Enzyme-Linked Immunosorbent Assay (Phospho-ELISA) for Immunogen Phosphopeptide (Phospho-left) and Non-Phosphopeptide (Phospho-right), using eEF2K (Phospho-Ser366) Antibody

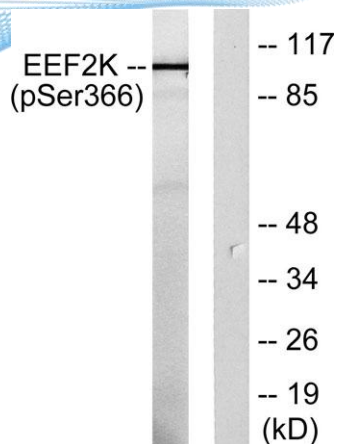


Immunohistochemistry analysis of paraffin-embedded human breast carcinoma, using eEF2K (Phospho-Ser366) Antibody. The picture on the right is blocked with the phospho peptide.





ELK Biotechnology



Western blot analysis of lysates from HeLa cells treated with serum 10% 15', using eEF2K (Phospho-Ser366) Antibody. The lane on the right is blocked with the phospho peptide.



+86-27-59760950

ELKbio@ELKbiotech.com

www.elkbiotech.com

23-2, No.388 Gaoxin 2nd Road,Wuhan East Lake Hi-tech Development Zone, Hubei , P.R.C