



PATL1 rabbit pAb

Cat No.:ES14251

For research use only

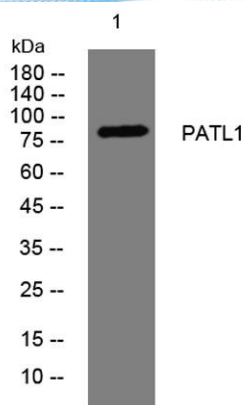
Overview

Product Name	PATL1 rabbit pAb
Host species	Rabbit
Applications	WB
Species Cross-Reactivity	Human; Mouse;Rat
Recommended dilutions	WB 1:500-2000
Immunogen	Synthesized peptide derived from human PATL1 AA range: 263-313
Specificity	This antibody detects endogenous levels of PATL1 at Human/Mouse/Rat
Formulation	Liquid in PBS containing 50% glycerol, 0.5% BSA and 0.02% sodium azide.
Storage	Store at -20°C. Avoid repeated freeze-thaw cycles.
Protein Name	PATL1
Gene Name	PATL1 OK/KNS-cl.5
Cellular localization	Cytoplasm, P-body . Nucleus . Nucleus, PML body . Nucleus speckle . Predominantly cytoplasmic (PubMed:22090346). Shuttles between the nucleus and the cytoplasm in a CRM1-dependent manner (PubMed:22090346). Enriched in splicing speckles. Localization to nu
Purification	The antibody was affinity-purified from rabbit antiserum by affinity-chromatography using epitope-specific immunogen.
Clonality	Polyclonal
Concentration	1 mg/ml
Observed band	85kD
Human Gene ID	219988
Human Swiss-Prot Number	Q86TB9
Alternative Names	Protein PAT1 homolog 1 (PAT1-like protein 1) (Protein PAT1 homolog b) (Pat1b) (hPat1b)
Background	





ELK Biotechnology



Western blot analysis of lysates from HCT116 cells,
primary antibody was diluted at 1:1000, 4° over night



+86-27-59760950

ELKbio@ELKbiotech.com

www.elkbiotech.com

23-2, No.388 Gaoxin 2nd Road, Wuhan East Lake Hi-tech Development Zone, Hubei, P.R.C