



# PBIP1 rabbit pAb

Cat No.:ES14243

For research use only

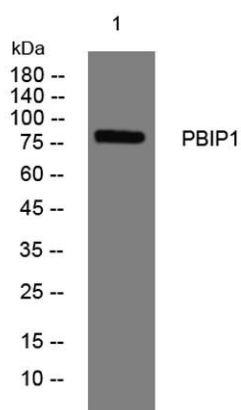
## Overview

<b>Product Name</b>	PBIP1 rabbit pAb
<b>Host species</b>	Rabbit
<b>Applications</b>	WB
<b>Species Cross-Reactivity</b>	Human; Mouse;Rat
<b>Recommended dilutions</b>	WB 1: 500-2000
<b>Immunogen</b>	Synthesized peptide derived from human PBIP1 AA range: 585-635
<b>Specificity</b>	This antibody detects endogenous levels of PBIP1 at Human/Mouse/Rat
<b>Formulation</b>	Liquid in PBS containing 50% glycerol, 0.5% BSA and 0.02% sodium azide.
<b>Storage</b>	Store at -20°C. Avoid repeated freeze-thaw cycles.
<b>Protein Name</b>	PBIP1
<b>Gene Name</b>	PBXIP1 HPIP
<b>Cellular localization</b>	Cytoplasm, cytoskeleton . Nucleus . Shuttles between the nucleus and the cytosol (PubMed:12360403). Mainly localized in the cytoplasm, associated with microtubules (PubMed:10825160, PubMed:12360403). Detected in small amounts in the nucleus (PubMed:108251
<b>Purification</b>	The antibody was affinity-purified from rabbit antiserum by affinity-chromatography using epitope-specific immunogen.
<b>Clonality</b>	Polyclonal
<b>Concentration</b>	1 mg/ml
<b>Observed band</b>	
<b>Human Gene ID</b>	57326
<b>Human Swiss-Prot Number</b>	Q96AQ6
<b>Alternative Names</b>	
<b>Background</b>	The protein encoded by this gene interacts with the PBX1 homeodomain protein, inhibiting its transcriptional activation potential by preventing its binding to DNA. The encoded protein, which is





primarily cytosolic but can shuttle to the nucleus, also can interact with estrogen receptors alpha and beta and promote the proliferation of breast cancer, brain tumors, and lung cancer. Several transcript variants encoding different isoforms have been found for this gene. More variants exist, but their full-length natures have yet to be determined. [provided by RefSeq, Dec 2015],



Western blot analysis of lysates from SW480 cells, primary antibody was diluted at 1:1000, 4° over night

