



# PCSK6 rabbit pAb

Cat No.:ES14195

For research use only

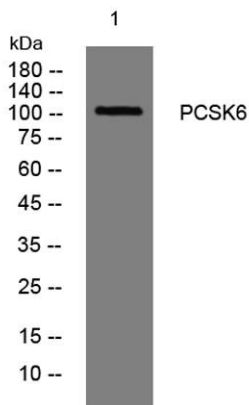
## Overview

<b>Product Name</b>	PCSK6 rabbit pAb
<b>Host species</b>	Rabbit
<b>Applications</b>	WB
<b>Species Cross-Reactivity</b>	Human;Rat
<b>Recommended dilutions</b>	WB 1:500-2000
<b>Immunogen</b>	Synthesized peptide derived from human PCSK6 AA range: 734-784
<b>Specificity</b>	This antibody detects endogenous levels of PCSK6 at Human/Rat
<b>Formulation</b>	Liquid in PBS containing 50% glycerol, 0.5% BSA and 0.02% sodium azide.
<b>Storage</b>	Store at -20°C. Avoid repeated freeze-thaw cycles.
<b>Protein Name</b>	PCSK6
<b>Gene Name</b>	PCSK6 PACE4
<b>Cellular localization</b>	[Isoform PACE4A-I]: Secreted.; [Isoform PACE4A-II]: Secreted.; [Isoform PACE4C]: Endoplasmic reticulum. Not secreted, remains probably in zymogen form in endoplasmic reticulum.; [Isoform PACE4CS]: Endoplasmic reticulum. Not secreted, remains probably in z
<b>Purification</b>	The antibody was affinity-purified from rabbit antiserum by affinity-chromatography using epitope-specific immunogen.
<b>Clonality</b>	Polyclonal
<b>Concentration</b>	1 mg/ml
<b>Observed band</b>	105kD
<b>Human Gene ID</b>	5046
<b>Human Swiss-Prot Number</b>	P29122
<b>Alternative Names</b>	Proprotein convertase subtilisin/kexin type 6 (EC 3.4.21.-) (Paired basic amino acid cleaving enzyme 4) (Subtilisin-like proprotein convertase 4) (SPC4) (Subtilisin/kexin-like protease PACE4)
<b>Background</b>	This gene encodes a member of the subtilisin-like





proprotein convertase family, which includes proteases that process protein and peptide precursors trafficking through regulated or constitutive branches of the secretory pathway. The encoded protein undergoes an initial autocatalytic processing event in the ER to generate a heterodimer which exits the ER and sorts to the trans-Golgi network where a second autocatalytic event takes place and the catalytic activity is acquired. The encoded protease is constitutively secreted into the extracellular matrix and expressed in many tissues, including neuroendocrine, liver, gut, and brain. This gene encodes one of the seven basic amino acid-specific members which cleave their substrates at single or paired basic residues. Some of its substrates include transforming growth factor beta related proteins, proalbumin, and von Willebrand factor. This gene is thought to play a role in tumor progression and left-right patterning. Alternatively spliced transcript variants encoding different isoforms have been identified. [provided by RefSeq, Feb 2014],



Western blot analysis of lysates from 3T3 cells, primary antibody was diluted at 1:1000, 4° over night

