



# PLCD3 rabbit pAb

Cat No.:ES14071

For research use only

## Overview

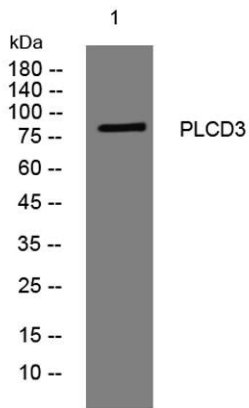
|                                 |  |
|---------------------------------|--|
| <b>Product Name</b>             | PLCD3 rabbit pAb   |
| <b>Host species</b>             | Rabbit   |
| <b>Applications</b>             | WB;IHC   |
| <b>Species Cross-Reactivity</b> | Human; Mouse   |
| <b>Recommended dilutions</b>    | WB 1:500-2000;IHC-p 1:50-300   |
| <b>Immunogen</b>                | Synthesized peptide derived from human PLCD3 AA range: 501-551   |
| <b>Specificity</b>              | This antibody detects endogenous levels of PLCD3 at Human/Mouse  |
| <b>Formulation</b>              | Liquid in PBS containing 50% glycerol, 0.5% BSA and 0.02% sodium azide.  |
| <b>Storage</b>                  | Store at -20°C. Avoid repeated freeze-thaw cycles.   |
| <b>Protein Name</b>             | PLCD3  |
| <b>Gene Name</b>                | PLCD3 KIAA1964   |
| <b>Cellular localization</b>    | Membrane; Peripheral membrane protein. Cytoplasm. Cleavage furrow . Localizes at the cleavage furrow during cytokinesis. .   |
| <b>Purification</b>             | The antibody was affinity-purified from rabbit antiserum by affinity-chromatography using epitope-specific immunogen.  |
| <b>Clonality</b>                | Polyclonal   |
| <b>Concentration</b>            | 1 mg/ml  |
| <b>Observed band</b>            |  |
| <b>Human Gene ID</b>            | 113026   |
| <b>Human Swiss-Prot Number</b>  | Q8N3E9   |
| <b>Alternative Names</b>        |  |
| <b>Background</b>               | This gene encodes a member of the phospholipase C family, which catalyze the hydrolysis of phosphatidylinositol 4,5-bisphosphate to generate the second messengers diacylglycerol and inositol 1,4,5-trisphosphate (IP3). Diacylglycerol and IP3 mediate a variety of cellular responses to extracellular stimuli by inducing protein kinase C and |





increasing cytosolic Ca(2+) concentrations. This enzyme localizes to the plasma membrane and requires calcium for activation. Its activity is inhibited by spermine, sphingosine, and several phospholipids. [provided by RefSeq, Jul 2008],

Western blot analysis of lysates from MCF-7 cells, primary antibody was diluted at 1:1000, 4° over night



Immunohistochemical analysis of paraffin-embedded human oophoroma. 1, Antibody was diluted at 1:200(4° overnight). 2, Tris-EDTA, pH9.0 was used for antigen retrieval. 3, Secondary antibody was diluted at 1:200(room temperature, 45min).

