

PRDM7 rabbit pAb

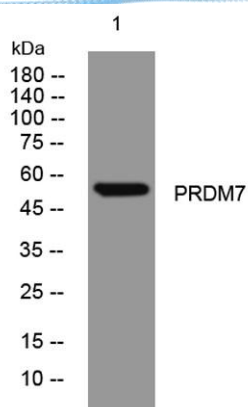
Cat No.:ES13961

For research use only

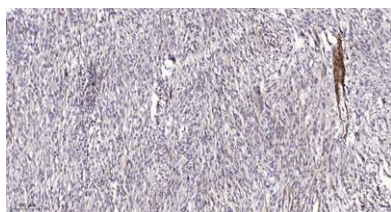
Overview

Product Name	PRDM7 rabbit pAb
Host species	Rabbit
Applications	WB;ELISA;IHC
Species Cross-Reactivity	Human;Rat;Mouse;
Recommended dilutions	WB 1:500-2000;IHC-p 1:50-300; ELISA 2000-20000
Immunogen	Synthesized peptide derived from human PRDM7 AA range: 28-78
Specificity	This antibody detects endogenous levels of PRDM7 at Human
Formulation	Liquid in PBS containing 50% glycerol, 0.5% BSA and 0.02% sodium azide.
Storage	Store at -20°C. Avoid repeated freeze-thaw cycles.
Protein Name	PRDM7
Gene Name	PRDM7 PFM4
Cellular localization	Nucleus . Chromosome .
Purification	The antibody was affinity-purified from rabbit antiserum by affinity-chromatography using epitope-specific immunogen.
Clonality	Polyclonal
Concentration	1 mg/ml
Observed band	
Human Gene ID	11105
Human Swiss-Prot Number	Q9NQW5
Alternative Names	
Background	This gene encodes a member of a family of proteins that may have roles in transcription and other nuclear processes. The encoded protein contains a KRAB (Kruppel-associated box) domain -A box and a SET (Su(var)3-9, Enhancer-of-zeste, Trithorax) domain and may function as a histone methyltransferase. [provided by RefSeq, Aug 2013],





Western blot analysis of lysates from HCT116 cells,
primary antibody was diluted at 1:1000, 4° over night



Immunohistochemical analysis of paraffin-embedded
human Colon cancer. 1, Antibody was diluted at 1:200(4°
overnight). 2, Tris-EDTA, pH9.0 was used for antigen
retrieval. 3, Secondary antibody was diluted at 1:200(room
temperature, 45min).

