



PSG9 rabbit pAb

Cat No.:ES13883

For research use only

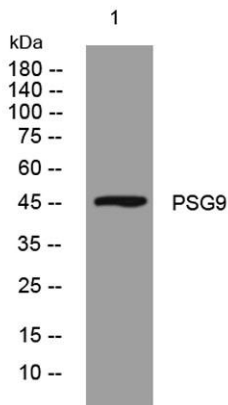
Overview

Product Name	PSG9 rabbit pAb
Host species	Rabbit
Applications	WB;ELISA;IHC
Species Cross-Reactivity	Human;Rat;Mouse;
Recommended dilutions	WB 1:500-2000;IHC-p 1:50-300; ELISA 2000-20000
Immunogen	Synthesized peptide derived from human PSG9 AA range: 340-390
Specificity	This antibody detects endogenous levels of PSG9 at Human
Formulation	Liquid in PBS containing 50% glycerol, 0.5% BSA and 0.02% sodium azide.
Storage	Store at -20°C. Avoid repeated freeze-thaw cycles.
Protein Name	PSG9
Gene Name	PSG9 PSG11
Cellular localization	Secreted .
Purification	The antibody was affinity-purified from rabbit antiserum by affinity-chromatography using epitope-specific immunogen.
Clonality	Polyclonal
Concentration	1 mg/ml
Observed band	
Human Gene ID	5678
Human Swiss-Prot Number	Q00887
Alternative Names	
Background	The protein encoded by this gene is a member of the pregnancy-specific glycoprotein (PSG) family. This protein family and the closely related carcinoembryonic antigen cell adhesion molecule (CEACAM) gene family are both members of the immunoglobulin superfamily, and are organized as a large gene cluster. This protein is thought to inhibit platelet-fibrinogen interactions. Several studies suggest that reduced serum concentrations of PSGs

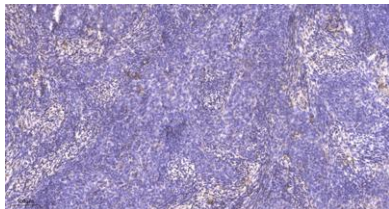




are associated with fetal growth restrictions, while up-regulation of this gene has been observed in colorectal cancers. Several pseudogenes of this gene are found on chromosome 19. Alternative splicing results in multiple transcript variants that encode multiple protein isoforms. [provided by RefSeq, Sep 2014],



Western blot analysis of lysates from HpeG2 cells, primary antibody was diluted at 1:1000, 4° over night



Immunohistochemical analysis of paraffin-embedded human cervical carcinoma. 1, Antibody was diluted at 1:200(4° overnight). 2, Tris-EDTA,pH9.0 was used for antigen retrieval. 3,Secondary antibody was diluted at 1:200(room temperature, 45min).

