



RECQ5 rabbit pAb

Cat No.:ES13430

For research use only

Overview

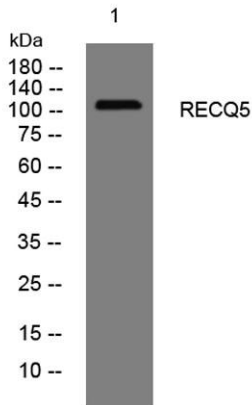
Product Name	RECQ5 rabbit pAb
Host species	Rabbit
Applications	WB;ELISA;IHC
Species Cross-Reactivity	Human;Rat;Mouse;
Recommended dilutions	WB 1:500-2000;IHC-p 1:50-300; ELISA 2000-20000
Immunogen	Synthesized peptide derived from human RECQ5 AA range: 647-697
Specificity	This antibody detects endogenous levels of RECQ5 at Human
Formulation	Liquid in PBS containing 50% glycerol, 0.5% BSA and 0.02% sodium azide.
Storage	Store at -20°C. Avoid repeated freeze-thaw cycles.
Protein Name	RECQ5
Gene Name	RECQL5 RECQ5
Cellular localization	[Isoform Beta]: Nucleus, nucleoplasm . Nucleus . Recruited to sites of DNA damage, such as single-strand breaks and inter-strand cross-links, and at stalled replication forks. Re-localizes from the nucleolus into the nucleus after replicative stress and s
Purification	The antibody was affinity-purified from rabbit antiserum by affinity-chromatography using epitope-specific immunogen.
Clonality	Polyclonal
Concentration	1 mg/ml
Observed band	
Human Gene ID	9400
Human Swiss-Prot Number	O94762
Alternative Names	
Background	The protein encoded by this gene is a helicase that is important for genome stability. The encoded protein also prevents aberrant homologous recombination by displacing RAD51 from ssDNA. Three transcript





variants encoding different isoforms have been found for this gene. [provided by RefSeq, Jul 2011],

Western blot analysis of lysates from U2OS cells, primary antibody was diluted at 1:1000, 4° over night



Immunohistochemical analysis of paraffin-embedded human oophoroma. 1, Antibody was diluted at 1:200(4° overnight). 2, Tris-EDTA,pH9.0 was used for antigen retrieval. 3,Secondary antibody was diluted at 1:200(room temperature, 45min).

