



# RNAS7 rabbit pAb

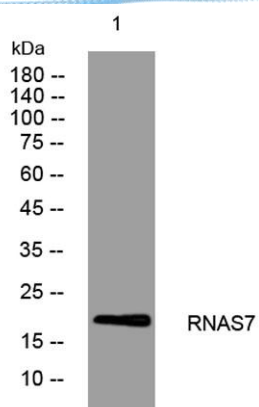
Cat No.:ES13365

For research use only

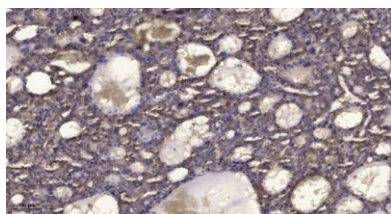
## Overview

<b>Product Name</b>	RNAS7 rabbit pAb
<b>Host species</b>	Rabbit
<b>Applications</b>	WB;ELISA;IHC
<b>Species Cross-Reactivity</b>	Human;Rat;Mouse;
<b>Recommended dilutions</b>	WB 1:500-2000;IHC-p 1:50-300; ELISA 2000-20000
<b>Immunogen</b>	Synthesized peptide derived from human RNAS7 AA range: 37-87
<b>Specificity</b>	This antibody detects endogenous levels of RNAS7 at Human
<b>Formulation</b>	Liquid in PBS containing 50% glycerol, 0.5% BSA and 0.02% sodium azide.
<b>Storage</b>	Store at -20°C. Avoid repeated freeze-thaw cycles.
<b>Protein Name</b>	RNAS7
<b>Gene Name</b>	RNASE7 UNQ2516/PRO6006
<b>Cellular localization</b>	Secreted . Detected in urine. .
<b>Purification</b>	The antibody was affinity-purified from rabbit antiserum by affinity-chromatography using epitope-specific immunogen.
<b>Clonality</b>	Polyclonal
<b>Concentration</b>	1 mg/ml
<b>Observed band</b>	
<b>Human Gene ID</b>	84659
<b>Human Swiss-Prot Number</b>	Q9H1E1
<b>Alternative Names</b>	
<b>Background</b>	The protein encoded by this gene belongs to the pancreatic ribonuclease family, a subset of the ribonuclease A superfamily. The protein has broad-spectrum antimicrobial activity against bacteria and fungi. [provided by RefSeq, Oct 2014],





Western blot analysis of lysates from HpeG2 cells, primary antibody was diluted at 1:1000, 4° over night



Immunohistochemical analysis of paraffin-embedded human liver cancer. 1, Antibody was diluted at 1:200(4° overnight). 2, Tris-EDTA,pH9.0 was used for antigen retrieval. 3,Secondary antibody was diluted at 1:200(room temperature, 45min).

