



RUBIC rabbit pAb

Cat No.:ES13314

For research use only

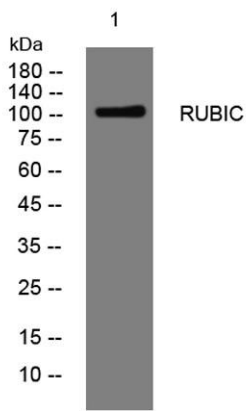
Overview

Product Name	RUBIC rabbit pAb
Host species	Rabbit
Applications	WB
Species Cross-Reactivity	Human; Mouse
Recommended dilutions	WB 1:500-2000
Immunogen	Synthesized peptide derived from human RUBIC AA range: 868-918
Specificity	This antibody detects endogenous levels of RUBIC at Human/Mouse
Formulation	Liquid in PBS containing 50% glycerol, 0.5% BSA and 0.02% sodium azide.
Storage	Store at -20°C. Avoid repeated freeze-thaw cycles.
Protein Name	RUBIC
Gene Name	KIAA0226
Cellular localization	Late endosome . Lysosome . Early endosome . Predominantly located in late endosomes/lysosomes, only partially detected in early endosome and not at all in the Golgi apparatus.
Purification	The antibody was affinity-purified from rabbit antiserum by affinity-chromatography using epitope-specific immunogen.
Clonality	Polyclonal
Concentration	1 mg/ml
Observed band	105kD
Human Gene ID	9711
Human Swiss-Prot Number	Q92622
Alternative Names	Run domain Beclin-1 interacting and cystein-rich containing protein (Rubicon) (Beclin-1 associated RUN domain containing protein) (Baron)
Background	The protein encoded by this gene is a negative regulator of autophagy and endocytic trafficking and controls endosome maturation. This protein





contains two conserved domains, an N-terminal RUN domain and a C-terminal DUF4206 domain. The RUN domain is involved in Ras-like GTPase signaling, and the DUF4206 domain contains a diacylglycerol (DAG) binding-like motif. Mutation in this gene results in deletion of the DAG binding-like motif and causes a recessive ataxia. Alternatively spliced transcript variants encoding distinct isoforms have been found for this gene. [provided by RefSeq, Apr 2014],



Western blot analysis of lysates from SW480 cells, primary antibody was diluted at 1:1000, 4° over night

