

S47A1 rabbit pAb

Cat No.:ES13226

For research use only

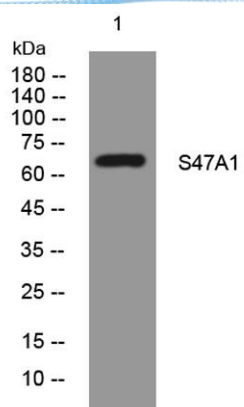
Overview

Product Name	S47A1 rabbit pAb
Host species	Rabbit
Applications	WB
Species Cross-Reactivity	Human; Mouse;Rat
Recommended dilutions	WB 1:500-2000
Immunogen	Synthesized peptide derived from human S47A1 AA range: 158-208
Specificity	This antibody detects endogenous levels of S47A1 at Human/Mouse/Rat
Formulation	Liquid in PBS containing 50% glycerol, 0.5% BSA and 0.02% sodium azide.
Storage	Store at -20°C. Avoid repeated freeze-thaw cycles.
Protein Name	S47A1
Gene Name	SLC47A1 MATE1
Cellular localization	Cell membrane ; Multi-pass membrane protein . Predominantly localized at the plasma membrane but also found in intracellular organelles.
Purification	The antibody was affinity-purified from rabbit antiserum by affinity-chromatography using epitope-specific immunogen.
Clonality	Polyclonal
Concentration	1 mg/ml
Observed band	65kD
Human Gene ID	55244
Human Swiss-Prot Number	Q96FL8
Alternative Names	Multidrug and toxin extrusion protein 1 (MATE-1) (hMATE-1) (Solute carrier family 47 member 1)
Background	This gene is located within the Smith-Magenis syndrome region on chromosome 17. It encodes a protein of unknown function. [provided by RefSeq, Jul 2008],





ELK Biotechnology



Western blot analysis of lysates from SH-SY5Y cells,
primary antibody was diluted at 1:1000, 4° over night



+86-27-59760950

ELKbio@ELKbiotech.com

www.elkbiotech.com

23-2, No.388 Gaoxin 2nd Road, Wuhan East Lake Hi-tech Development Zone, Hubei, P.R.C.