



SALL2 rabbit pAb

Cat No.:ES13212

For research use only

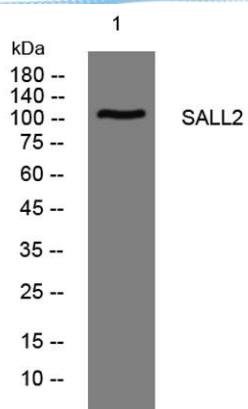
Overview

Product Name	SALL2 rabbit pAb
Host species	Rabbit
Applications	WB
Species Cross-Reactivity	Human; Mouse
Recommended dilutions	WB 1: 500-2000
Immunogen	Synthesized peptide derived from human SALL2 AA range: 956-1006
Specificity	This antibody detects endogenous levels of SALL2 at Human/Mouse
Formulation	Liquid in PBS containing 50% glycerol, 0.5% BSA and 0.02% sodium azide.
Storage	Store at -20°C. Avoid repeated freeze-thaw cycles.
Protein Name	SALL2
Gene Name	SALL2 KIAA0360 SAL2 ZNF795
Cellular localization	Nucleus .
Purification	The antibody was affinity-purified from rabbit antiserum by affinity-chromatography using epitope-specific immunogen.
Clonality	Polyclonal
Concentration	1 mg/ml
Observed band	
Human Gene ID	6297
Human Swiss-Prot Number	Q9Y467
Alternative Names	
Background	This gene encodes a protein containing multiple zinc finger domains. The encoded protein functions in optical fissure closure during development of the eye in the embryo. Mutations in this gene are associated with ocular coloboma. [provided by RefSeq, Jul 2016],





ELK Biotechnology



Western blot analysis of lysates from HpeG2 cells, primary antibody was diluted at 1:1000, 4° over night



+86-27-59760950

ELKbio@ELKbiotech.com

www.elkbiotech.com

23-2, No.388 Gaoxin 2nd Road, Wuhan East Lake Hi-tech Development Zone, Hubei, P.R.C.