



# SC6A9 rabbit pAb

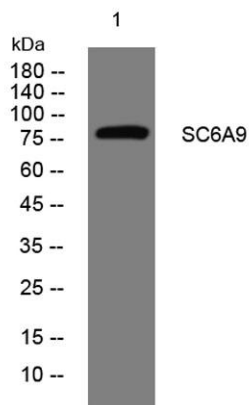
Cat No.:ES13188

For research use only

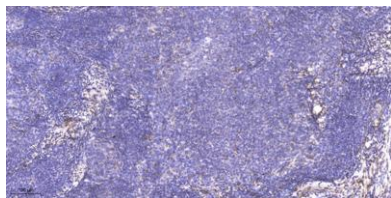
## Overview

|                          |  |
|--------------------------|--|
| Product Name             | SC6A9 rabbit pAb   |
| Host species             | Rabbit   |
| Applications             | WB;ELISA;IHC   |
| Species Cross-Reactivity | Human; Mouse;Rat   |
| Recommended dilutions    | WB 1:500-2000;IHC-p 1:50-300; ELISA 2000-20000   |
| Immunogen                | Synthesized peptide derived from human SC6A9 AA range: 101-151   |
| Specificity              | This antibody detects endogenous levels of SC6A9 at Human/Mouse/Rat  |
| Formulation              | Liquid in PBS containing 50% glycerol, 0.5% BSA and 0.02% sodium azide.  |
| Storage                  | Store at -20°C. Avoid repeated freeze-thaw cycles.   |
| Protein Name             | SC6A9  |
| Gene Name                | SLC6A9   |
| Cellular localization    | Membrane; Multi-pass membrane protein.   |
| Purification             | The antibody was affinity-purified from rabbit antiserum by affinity-chromatography using epitope-specific immunogen.  |
| Clonality                | Polyclonal   |
| Concentration            | 1 mg/ml  |
| Observed band            |  |
| Human Gene ID            | 6536   |
| Human Swiss-Prot Number  | P48067   |
| Alternative Names        |  |
| Background               | The amino acid glycine acts as an inhibitory neurotransmitter in the central nervous system. The protein encoded by this gene is one of two transporters that stop glycine signaling by removing it from the synaptic cleft. [provided by RefSeq, Jun 2016], |





Western blot analysis of lysates from SH-SY5Y cells, primary antibody was diluted at 1:1000, 4° over night



Immunohistochemical analysis of paraffin-embedded human cervical carcinoma. 1, Antibody was diluted at 1:200(4° overnight). 2, Tris-EDTA, pH9.0 was used for antigen retrieval. 3, Secondary antibody was diluted at 1:200(room temperature, 45min).

