



SGPL1 rabbit pAb

Cat No.:ES13132

For research use only

Overview

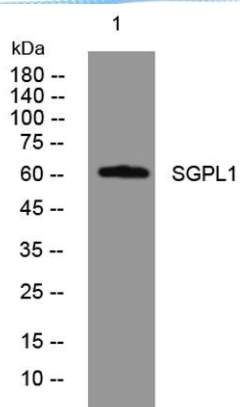
Product Name	SGPL1 rabbit pAb
Host species	Rabbit
Applications	WB
Species Cross-Reactivity	Human; Mouse;Rat
Recommended dilutions	WB 1:500-2000
Immunogen	Synthesized peptide derived from human SGPL1 AA range: 393-443
Specificity	This antibody detects endogenous levels of SGPL1 at Human/Mouse/Rat
Formulation	Liquid in PBS containing 50% glycerol, 0.5% BSA and 0.02% sodium azide.
Storage	Store at -20°C. Avoid repeated freeze-thaw cycles.
Protein Name	SGPL1
Gene Name	SGPL1 KIAA1252
Cellular localization	Endoplasmic reticulum membrane ; Single-pass type III membrane protein ; Cytoplasmic side .
Purification	The antibody was affinity-purified from rabbit antiserum by affinity-chromatography using epitope-specific immunogen.
Clonality	Polyclonal
Concentration	1 mg/ml
Observed band	60kD
Human Gene ID	8879
Human Swiss-Prot Number	O95470
Alternative Names	Sphingosine-1-phosphate lyase 1 (S1PL) (SP-lyase 1) (SPL 1) (hSPL) (EC 4.1.2.27) (Sphingosine-1-phosphate aldolase)

Background





ELK Biotechnology



Western blot analysis of lysates from KB cells, primary antibody was diluted at 1:1000, 4° over night



+86-27-59760950

ELKbio@ELKbiotech.com

www.elkbiotech.com

23-2, No.388 Gaoxin 2nd Road, Wuhan East Lake Hi-tech Development Zone, Hubei, P.R.C