



SPE39 rabbit pAb

Cat No.:ES12994

For research use only

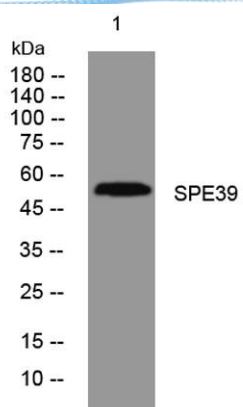
Overview

Product Name	SPE39 rabbit pAb
Host species	Rabbit
Applications	WB
Species Cross-Reactivity	Human; Mouse;Rat
Recommended dilutions	WB 1: 500-2000
Immunogen	Synthesized peptide derived from human SPE39 AA range: 76-126
Specificity	This antibody detects endogenous levels of SPE39 at Human/Mouse/Rat
Formulation	Liquid in PBS containing 50% glycerol, 0.5% BSA and 0.02% sodium azide.
Storage	Store at -20°C. Avoid repeated freeze-thaw cycles.
Protein Name	SPE39
Gene Name	VIPAS39 C14orf133 SPE39 VIPAR
Cellular localization	Cytoplasm . Cytoplasmic vesicle . Early endosome . Recycling endosome . Late endosome . Colocalizes in clusters with VPS33B at cytoplasmic organelles (PubMed:19109425).
Purification	The antibody was affinity-purified from rabbit antiserum by affinity-chromatography using epitope-specific immunogen.
Clonality	Polyclonal
Concentration	1 mg/ml
Observed band	
Human Gene ID	63894
Human Swiss-Prot Number	Q9H9C1
Alternative Names	
Background	This gene encodes a protein involved in the sorting of lysosomal proteins. Mutations in this gene are associated with ARCS2 (arthrogryposis, renal dysfunction, and cholestasis-2). Alternative splicing results in multiple transcript variants.[provided by RefSeq, Jul 2010],





ELK Biotechnology



Western blot analysis of lysates from HpeG2 cells, primary antibody was diluted at 1:1000, 4° over night



+86-27-59760950

ELKbio@ELKbiotech.com

www.elkbiotech.com

23-2, No.388 Gaoxin 2nd Road, Wuhan East Lake Hi-tech Development Zone, Hubei, P.R.C.