



SYFM rabbit pAb

Cat No.:ES12866

For research use only

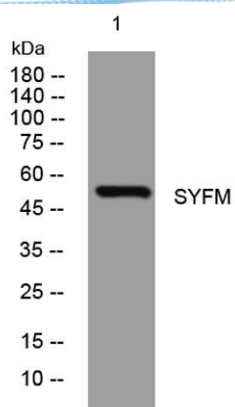
Overview

Product Name	SYFM rabbit pAb
Host species	Rabbit
Applications	WB;ELISA;IHC
Species Cross-Reactivity	Human; Mouse;Rat
Recommended dilutions	WB 1:500-2000;IHC-p 1:50-300; ELISA 2000-20000
Immunogen	Synthesized peptide derived from human SYFM AA range: 294-344
Specificity	This antibody detects endogenous levels of SYFM at Human/Mouse/Rat
Formulation	Liquid in PBS containing 50% glycerol, 0.5% BSA and 0.02% sodium azide.
Storage	Store at -20°C. Avoid repeated freeze-thaw cycles.
Protein Name	SYFM
Gene Name	FARS2 FARS1 HSPC320
Cellular localization	Mitochondrion matrix . Mitochondrion .
Purification	The antibody was affinity-purified from rabbit antiserum by affinity-chromatography using epitope-specific immunogen.
Clonality	Polyclonal
Concentration	1 mg/ml
Observed band	
Human Gene ID	10667
Human Swiss-Prot Number	O95363
Alternative Names	
Background	This gene encodes a protein that transfers phenylalanine to its cognate tRNA. This protein localizes to the mitochondrion and plays a role in mitochondrial protein translation. Mutations in this gene can cause combined oxidative phosphorylation deficiency 14 (Alpers encephalopathy). Alternative splicing results in multiple transcript variants. [provided by RefSeq, Jan 2016],



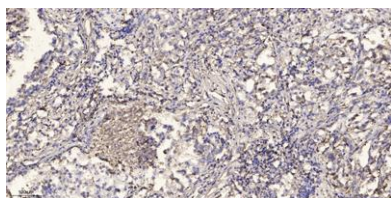


ELK Biotechnology



Western blot analysis of lysates from HeLa cells, primary antibody was diluted at 1:1000, 4° over night

Immunohistochemical analysis of paraffin-embedded human Squamous cell carcinoma of lung. 1, Antibody was diluted at 1:200(4° overnight). 2, Tris-EDTA,pH9.0 was used for antigen retrieval. 3,Secondary antibody was diluted at 1:200(room temperature, 45min).



+86-27-59760950

ELKbio@ELKbiotech.com

www.elkbiotech.com

23-2, No.388 Gaoxin 2nd Road,Wuhan East Lake Hi-tech Development Zone, Hubei , P.R.C