

# SYTL1 rabbit pAb

Cat No.:ES12851

For research use only

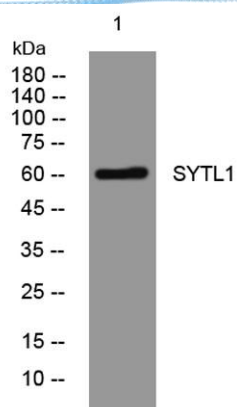
## Overview

Product Name	SYTL1 rabbit pAb
Host species	Rabbit
Applications	WB
Species Cross-Reactivity	Human; Mouse
Recommended dilutions	WB 1:500-2000
Immunogen	Synthesized peptide derived from human SYTL1 AA range: 333-383
Specificity	This antibody detects endogenous levels of SYTL1 at Human/Mouse
Formulation	Liquid in PBS containing 50% glycerol, 0.5% BSA and 0.02% sodium azide.
Storage	Store at -20°C. Avoid repeated freeze-thaw cycles.
Protein Name	SYTL1
Gene Name	SYTL1 SLP1 SB146
Cellular localization	Cell membrane ; Peripheral membrane protein ; Cytoplasmic side . Peripheral membrane protein tightly bound to the cytoplasmic side of cellular membranes.
Purification	The antibody was affinity-purified from rabbit antiserum by affinity-chromatography using epitope-specific immunogen.
Clonality	Polyclonal
Concentration	1 mg/ml
Observed band	60kD
Human Gene ID	84958
Human Swiss-Prot Number	Q8IYJ3
Alternative Names	Synaptotagmin-like protein 1 (Exophilin-7) (Protein JFC1)
Background	





**ELK Biotechnology**



Western blot analysis of lysates from Jarkat cells, primary antibody was diluted at 1:1000, 4° over night



+86-27-59760950

ELKbio@ELKbiotech.com

[www.elkbiotech.com](http://www.elkbiotech.com)

23-2, No.388 Gaoxin 2nd Road, Wuhan East Lake Hi-tech Development Zone, Hubei, P.R.C.