



# TLE3 rabbit pAb

Cat No.:ES12682

For research use only

## Overview

<b>Product Name</b>	TLE3 rabbit pAb
<b>Host species</b>	Rabbit
<b>Applications</b>	WB
<b>Species Cross-Reactivity</b>	Human; Mouse;Rat
<b>Recommended dilutions</b>	WB 1:500-2000
<b>Immunogen</b>	Synthesized peptide derived from human TLE3 AA range: 257-307
<b>Specificity</b>	This antibody detects endogenous levels of TLE3 at Human/Mouse/Rat
<b>Formulation</b>	Liquid in PBS containing 50% glycerol, 0.5% BSA and 0.02% sodium azide.
<b>Storage</b>	Store at -20°C. Avoid repeated freeze-thaw cycles.
<b>Protein Name</b>	TLE3
<b>Gene Name</b>	TLE3 KIAA1547
<b>Cellular localization</b>	Nucleus.
<b>Purification</b>	The antibody was affinity-purified from rabbit antiserum by affinity-chromatography using epitope-specific immunogen.
<b>Clonality</b>	Polyclonal
<b>Concentration</b>	1 mg/ml
<b>Observed band</b>	85kD
<b>Human Gene ID</b>	7090
<b>Human Swiss-Prot Number</b>	Q04726
<b>Alternative Names</b>	Transducin-like enhancer protein 3 (Enhancer of split groucho-like protein 3) (ESG3)
<b>Background</b>	This gene encodes a transcriptional co-repressor protein that belongs to the transducin-like enhancer family of proteins. The members of this family function in the Notch signaling pathway that regulates determination of cell fate during development. Expression of this gene has been associated with a favorable outcome to chemotherapy with taxanes for ovarian carcinoma.

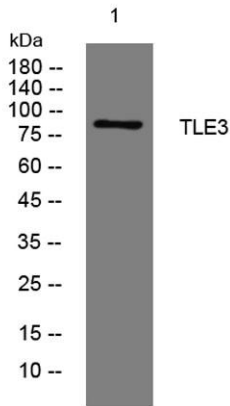




**ELK Biotechnology**

Alternate splicing results in multiple transcript variants. Additional alternatively spliced transcript variants of this gene have been described, but their full-length nature is not known. [provided by RefSeq, Sep 2013],

Western blot analysis of lysates from THP-1 cells, primary antibody was diluted at 1:1000, 4° over night



+86-27-59760950

[ELKbio@ELKbiotech.com](mailto:ELKbio@ELKbiotech.com)

[www.elkbiotech.com](http://www.elkbiotech.com)

23-2, No.388 Gaoxin 2nd Road, Wuhan East Lake Hi-tech Development Zone, Hubei, P.R.C