



TM14A rabbit pAb

Cat No.:ES12672

For research use only

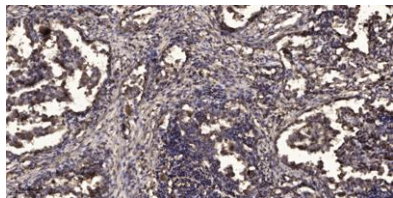
Overview

Product Name	TM14A rabbit pAb
Host species	Rabbit
Applications	IHC;IF
Species Cross-Reactivity	Human; Mouse
Recommended dilutions	IHC-p 1: 50-200
Immunogen	Synthesized peptide derived from human TM14A AA range: 6-56
Specificity	This antibody detects endogenous levels of TM14A at Human/Mouse
Formulation	Liquid in PBS containing 50% glycerol, 0.5% BSA and 0.02% sodium azide.
Storage	Store at -20°C. Avoid repeated freeze-thaw cycles.
Protein Name	TM14A
Gene Name	TMEM14A C6orf73 PTD011
Cellular localization	Mitochondrion membrane ; Multi-pass membrane protein . Endoplasmic reticulum membrane .
Purification	The antibody was affinity-purified from rabbit antiserum by affinity-chromatography using epitope-specific immunogen.
Clonality	Polyclonal
Concentration	1 mg/ml
Observed band	
Human Gene ID	28978
Human Swiss-Prot Number	Q9Y6G1
Alternative Names	
Background	





ELK Biotechnology



Immunohistochemical analysis of paraffin-embedded human Squamous cell carcinoma of lung. 1, Antibody was diluted at 1:200(4° overnight). 2, Tris-EDTA,pH9.0 was used for antigen retrieval. 3,Secondary antibody was diluted at 1:200(room temperature, 45min).



+86-27-59760950

ELKbio@ELKbiotech.com

www.elkbiotech.com

23-2, No.388 Gaoxin 2nd Road,Wuhan East Lake Hi-tech Development Zone, Hubei , P.R.C