

WDR62 rabbit pAb

Cat No.:ES12315

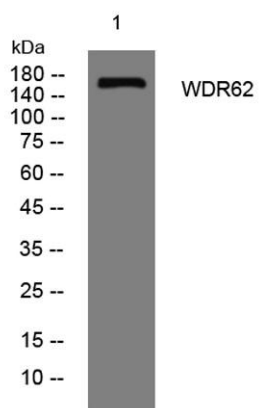
For research use only

Overview

Product Name	WDR62 rabbit pAb
Host species	Rabbit
Applications	WB
Species Cross-Reactivity	Human; Mouse
Recommended dilutions	WB 1: 500-2000
Immunogen	Synthesized peptide derived from human WDR62 AA range: 984-1034
Specificity	This antibody detects endogenous levels of WDR62 at Human/Mouse
Formulation	Liquid in PBS containing 50% glycerol, 0.5% BSA and 0.02% sodium azide.
Storage	Store at -20°C. Avoid repeated freeze-thaw cycles.
Protein Name	WDR62
Gene Name	WDR62 C19orf14
Cellular localization	Nucleus . Cytoplasm, cytoskeleton, spindle pole . Cytoplasm, cytoskeleton, microtubule organizing center, centrosome . Cytoplasm, cytoskeleton, microtubule organizing center, centrosome, centriole . Shows cell cycle-dependent localization. Accumulates to
Purification	The antibody was affinity-purified from rabbit antiserum by affinity-chromatography using epitope-specific immunogen.
Clonality	Polyclonal
Concentration	1 mg/ml
Observed band	
Human Gene ID	284403
Human Swiss-Prot Number	O43379
Alternative Names	
Background	This gene is proposed to play a role in cerebral cortical development. Mutations in this gene have been associated with microencephaly, cortical malformations, and mental retardation. Alternative



splicing results in multiple transcript variants.
[provided by RefSeq, Jan 2011],



Western blot analysis of lysates from MCF-7 cells, primary
antibody was diluted at 1:1000, 4° over night

