



GON2 rabbit pAb

Cat No.:ES11872

For research use only

Overview

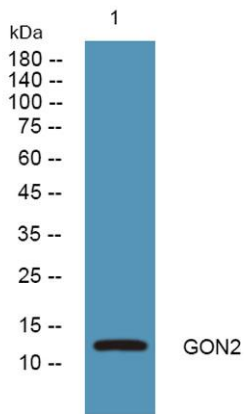
Product Name	GON2 rabbit pAb
Host species	Rabbit
Applications	WB;ELISA
Species Cross-Reactivity	Human;Rat;Mouse;
Recommended dilutions	WB 1:500-2000 ELISA 1:5000-20000
Immunogen	Synthesized peptide derived from part region of human protein AA range: 1-50
Specificity	GON2 Polyclonal Antibody detects endogenous levels of protein.
Formulation	Liquid in PBS containing 50% glycerol, 0.5% BSA and 0.02% sodium azide.
Storage	Store at -20°C. Avoid repeated freeze-thaw cycles.
Protein Name	Progonadoliberein-2 (Progonadoliberein II) [Cleaved into: Gonadoliberein-2 (Gonadoliberein II) (Gonadotropin-releasing hormone II) (GnRH II) (Luliberin II) (Luteinizing hormone-releasing hormone II) (LH-R
Gene Name	GNRH2
Cellular localization	Secreted.
Purification	The antibody was affinity-purified from rabbit antiserum by affinity-chromatography using epitope-specific immunogen.
Clonality	Polyclonal
Concentration	1 mg/ml
Observed band	13kD
Human Gene ID	2797
Human Swiss-Prot Number	O43555
Alternative Names	
Background	gonadotropin releasing hormone 2(GNRH2) Homo sapiens This gene encodes a secreted peptide hormone and member of the gonadotropin-releasing hormone (GnRH) family of proteins. The encoded protein regulates





ELK Biotechnology

reproductive function by stimulating the production and release of the gonadotropins follicle-stimulating hormone (FSH) and luteinizing hormone (LH). The encoded protein may inhibit endometrial, ovarian, prostate, and breast cancer cell proliferation. Alternative splicing results in multiple transcript variants. [provided by RefSeq, Jul 2015],



Western blot analysis of lysates from Jarkat cells, primary antibody was diluted at 1:1000, 4° over night



+86-27-59760950

ELKbio@ELKbiotech.com

www.elkbiotech.com

23-2, No.388 Gaoxin 2nd Road, Wuhan East Lake Hi-tech Development Zone, Hubei, P.R.C