



PCY1A rabbit pAb

Cat No.:ES11854

For research use only

Overview

Product Name	PCY1A rabbit pAb
Host species	Rabbit
Applications	WB;ELISA
Species Cross-Reactivity	Human;Mouse;Rat
Recommended dilutions	WB 1:500-2000 ELISA 1:5000-20000
Immunogen	Synthesized peptide derived from part region of human protein
Specificity	PCY1A Polyclonal Antibody detects endogenous levels of protein.
Formulation	Liquid in PBS containing 50% glycerol, 0.5% BSA and 0.02% sodium azide.
Storage	Store at -20°C. Avoid repeated freeze-thaw cycles.
Protein Name	Choline-phosphate cytidyltransferase A (EC 2.7.7.15) (CCT-alpha) (CTP:phosphocholine cytidyltransferase A) (CCT A) (CT A) (Phosphorylcholine transferase A)
Gene Name	PCYT1A CTPCT PCYT1
Cellular localization	Cytoplasm, cytosol . Membrane ; Peripheral membrane protein . Endoplasmic reticulum . Nucleus . It can interconvert between an inactive cytosolic form and an active membrane-bound form. .
Purification	The antibody was affinity-purified from rabbit antiserum by affinity-chromatography using epitope-specific immunogen.
Clonality	Polyclonal
Concentration	1 mg/ml
Observed band	40kD
Human Gene ID	5130
Human Swiss-Prot Number	P49585
Alternative Names	
Background	This gene belongs to the cytidyltransferase family and is involved in the regulation of

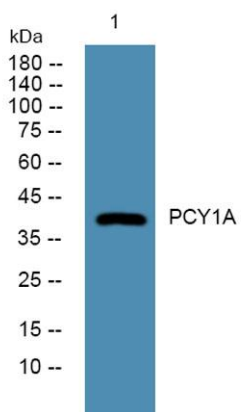




ELK Biotechnology

phosphatidylcholine biosynthesis. Mutations in this gene are associated with spondylometaphyseal dysplasia with cone-rod dystrophy. Alternatively spliced transcript variants have been found for this gene. [provided by RefSeq, Aug 2015],

Western blot analysis of lysates from A431 cells, primary antibody was diluted at 1:1000, 4° over night



+86-27-59760950

ELKbio@ELKbiotech.com

www.elkbiotech.com

23-2, No.388 Gaoxin 2nd Road, Wuhan East Lake Hi-tech Development Zone, Hubei, P.R.C