



# CLC10 rabbit pAb

Cat No.:ES10866

For research use only

## Overview

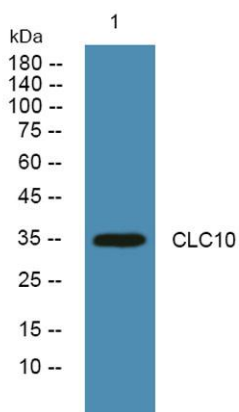
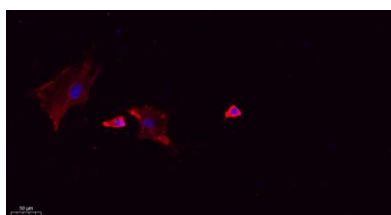
<b>Product Name</b>	CLC10 rabbit pAb
<b>Host species</b>	Rabbit
<b>Applications</b>	WB IF;ELISA
<b>Species Cross-Reactivity</b>	Human;Rat;Mouse
<b>Recommended dilutions</b>	WB 1:500-2000 IF 1:100-300 ELISA 1:5000-20000 Not yet tested in other applications.
<b>Immunogen</b>	Synthesized peptide derived from part region of human protein AA range: 191-240
<b>Specificity</b>	CLC10 Polyclonal Antibody detects endogenous levels of protein.
<b>Formulation</b>	Liquid in PBS containing 50% glycerol, 0.5% BSA and 0.02% sodium azide.
<b>Storage</b>	Store at -20°C. Avoid repeated freeze-thaw cycles.
<b>Protein Name</b>	C-type lectin domain family 10 member A (C-type lectin superfamily member 14) (Macrophage lectin 2) (CD antigen CD301)
<b>Gene Name</b>	CLEC10A CLECSF13 CLECSF14 HML
<b>Cellular localization</b>	Membrane ; Single-pass type II membrane protein .
<b>Purification</b>	The antibody was affinity-purified from rabbit antiserum by affinity-chromatography using epitope-specific immunogen.
<b>Clonality</b>	Polyclonal
<b>Concentration</b>	1 mg/ml
<b>Observed band</b>	34kD
<b>Human Gene ID</b>	10462
<b>Human Swiss-Prot Number</b>	Q8IUN9
<b>Alternative Names</b>	
<b>Background</b>	This gene encodes a member of the C-type lectin/C-type lectin-like domain (CTL/CTLD) superfamily. Members of this family share a common protein fold and have diverse functions, such as cell adhesion, cell-cell signalling, glycoprotein turnover, and roles in inflammation and





immune response. The encoded type 2 transmembrane protein may function as a cell surface antigen. Two transcript variants encoding distinct isoforms have been identified for this gene. [provided by RefSeq, Jul 2008],

Immunofluorescence analysis of A549. 1,primary Antibody(red) was diluted at 1:200(4°C overnight). 2, Goat Anti Rabbit IgG (H&L) - Alexa Fluor 594 Secondary antibody was diluted at 1:1000(room temperature, 50min).3, Picture B: DAPI(blue) 10min.



Western blot analysis of lysates from KB cells, primary antibody was diluted at 1:1000, 4°over night

