

# TAOK2 rabbit pAb

Cat No.:ES10832

For research use only

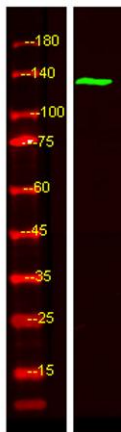
## Overview

Product Name	TAOK2 rabbit pAb
Host species	Rabbit
Applications	WB;ELISA
Species Cross-Reactivity	Human;Mouse;Rat
Recommended dilutions	WB 1:500-2000 ELISA 1:5000-20000
Immunogen	Synthesized peptide derived from part region of human protein
Specificity	TAOK2 Polyclonal Antibody detects endogenous levels of protein.
Formulation	Liquid in PBS containing 50% glycerol, 0.5% BSA and 0.02% sodium azide.
Storage	Store at -20°C. Avoid repeated freeze-thaw cycles.
Protein Name	Serine/threonine-protein kinase TAO2 (EC 2.7.11.1) (Kinase from chicken homolog C) (hKFC-C) (Prostate-derived sterile 20-like kinase 1) (PSK-1) (PSK1) (Prostate-derived STE20-like kinase 1) (Thousand
Gene Name	TAOK2 KIAA0881 MAP3K17 PSK PSK1 UNQ2971/PRO7431
Cellular localization	Cytoplasmic vesicle membrane ; Multi-pass membrane protein . Cytoplasm, cytoskeleton. Nucleus. Catalytically active full-length phosphorylated isoform 1 localizes to microtubules in the cytoplasm predominantly on microtubule cables positioned around the n
Purification	The antibody was affinity-purified from rabbit antiserum by affinity-chromatography using epitope-specific immunogen.
Clonality	Polyclonal
Concentration	1 mg/ml
Observed band	135kD
Human Gene ID	9344
Human Swiss-Prot Number	Q9UL54



## Alternative Names Background

This gene encodes a serine/threonine protein kinase that is involved in many different processes, including, cell signaling, microtubule organization and stability, and apoptosis. Alternatively spliced transcript variants encoding different isoforms have been described for this gene. [provided by RefSeq, Oct 2011],



Western Blot analysis of HEK293 lysis, using primary antibody at 1:1000 dilution. Secondary antibody(catalog#:RS23920) was diluted at 1:10000

