



ALKB3 rabbit pAb

Cat No.:ES10629

For research use only

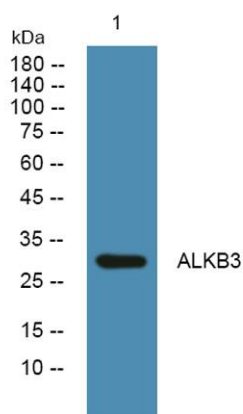
Overview

Product Name	ALKB3 rabbit pAb
Host species	Rabbit
Applications	WB;ELISA
Species Cross-Reactivity	Human;Rat;Mouse;
Recommended dilutions	WB 1:500-2000 ELISA 1:5000-20000
Immunogen	Synthesized peptide derived from human protein . at AA range: 110-190
Specificity	ALKB3 Polyclonal Antibody detects endogenous levels of protein.
Formulation	Liquid in PBS containing 50% glycerol, 0.5% BSA and 0.02% sodium azide.
Storage	Store at -20°C. Avoid repeated freeze-thaw cycles.
Protein Name	Alpha-ketoglutarate-dependent dioxygenase alkB homolog 3 (EC 1.14.11.-) (Alkylated DNA repair protein alkB homolog 3) (DEPC-1) (Prostate cancer antigen 1)
Gene Name	ALKBH3 ABH3 DEPC1
Cellular localization	Nucleus . Cytoplasm . Colocalizes with ASCC2 and ASCC3 in nuclear foci when cells have been exposed to alkylating agents that cause DNA damage (PubMed:29144457). Predominantly localizes to the nucleus. .
Purification	The antibody was affinity-purified from rabbit antiserum by affinity-chromatography using epitope-specific immunogen.
Clonality	Polyclonal
Concentration	1 mg/ml
Observed band	31kD
Human Gene ID	221120
Human Swiss-Prot Number	Q96Q83
Alternative Names	
Background	The Escherichia coli AlkB protein protects against the cytotoxicity of methylating agents by repair of





the specific DNA lesions generated in single-stranded DNA. ALKBH2 (MIM 610602) and ALKBH3 are E. coli AlkB homologs that catalyze the removal of 1-methyladenine and 3-methylcytosine (Duncan et al., 2002 [PubMed 12486230]).[supplied by OMIM, Mar 2008],



Western blot analysis of lysates from SW480 cells, primary antibody was diluted at 1:1000, 4° over night

