



# CENPR rabbit pAb

Cat No.:ES10528

For research use only

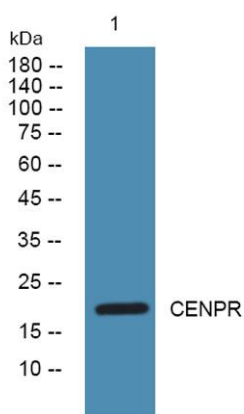
## Overview

<b>Product Name</b>	CENPR rabbit pAb
<b>Host species</b>	Rabbit
<b>Applications</b>	WB;ELISA
<b>Species Cross-Reactivity</b>	Human;Rat;Mouse;
<b>Recommended dilutions</b>	WB 1:500-2000 ELISA 1:5000-20000
<b>Immunogen</b>	Synthesized peptide derived from human protein . at AA range: 10-90
<b>Specificity</b>	CENPR Polyclonal Antibody detects endogenous levels of protein.
<b>Formulation</b>	Liquid in PBS containing 50% glycerol, 0.5% BSA and 0.02% sodium azide.
<b>Storage</b>	Store at -20°C. Avoid repeated freeze-thaw cycles.
<b>Protein Name</b>	Centromere protein R (CENP-R) (Beta-3-endonexin) (Integrin beta-3-binding protein) (Nuclear receptor-interacting factor 3)
<b>Gene Name</b>	ITGB3BP CENPR NRIF3
<b>Cellular localization</b>	[Isoform 1]: Nucleus. Chromosome, centromere. Chromosome, centromere, kinetochore.; [Isoform 2]: Nucleus.; [Isoform 3]: Nucleus. Cytoplasm. Isoform 3 is predominantly nuclear and weakly cytoplasmic.; [Isoform 4]: Cytoplasm.
<b>Purification</b>	The antibody was affinity-purified from rabbit antiserum by affinity-chromatography using epitope-specific immunogen.
<b>Clonality</b>	Polyclonal
<b>Concentration</b>	1 mg/ml
<b>Observed band</b>	19kD
<b>Human Gene ID</b>	23421
<b>Human Swiss-Prot Number</b>	Q13352
<b>Alternative Names</b>	
<b>Background</b>	This gene encodes a transcriptional coregulator that binds to and enhances the activity of members of the nuclear receptor families, thyroid hormone





receptors and retinoid X receptors. This protein also acts as a corepressor of NF-kappaB-dependent signaling. This protein induces apoptosis in breast cancer cells through a caspase 2-mediated signaling pathway. This protein is also a component of the centromere-specific histone H3 variant nucleosome associated complex (CENP-NAC) and may be involved in mitotic progression by recruiting the histone H3 variant CENP-A to the centromere. Alternate splicing results in multiple transcript variants. [provided by RefSeq, Sep 2011],



Western blot analysis of lysates from K562 cells, primary antibody was diluted at 1:1000, 4° over night

