



SASH3 rabbit pAb

Cat No.:ES10254

For research use only

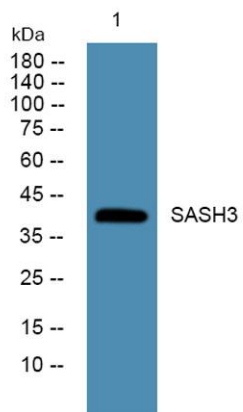
Overview

Product Name	SASH3 rabbit pAb
Host species	Rabbit
Applications	WB;ELISA
Species Cross-Reactivity	Human;Mouse
Recommended dilutions	WB 1:500-2000 ELISA 1:5000-20000
Immunogen	Synthesized peptide derived from part region of human protein
Specificity	SASH3 Polyclonal Antibody detects endogenous levels of protein.
Formulation	Liquid in PBS containing 50% glycerol, 0.5% BSA and 0.02% sodium azide.
Storage	Store at -20°C. Avoid repeated freeze-thaw cycles.
Protein Name	SAM and SH3 domain-containing protein 3 (SH3 protein expressed in lymphocytes homolog)
Gene Name	SASH3 CXorf9 SLY
Cellular localization	nucleus,cytoplasm,
Purification	The antibody was affinity-purified from rabbit antiserum by affinity-chromatography using epitope-specific immunogen.
Clonality	Polyclonal
Concentration	1 mg/ml
Observed band	41kD
Human Gene ID	54440
Human Swiss-Prot Number	O75995
Alternative Names	
Background	The protein encoded by this gene contains a Src homology-3 (SH3) domain and a sterile alpha motif (SAM), both of which are found in proteins involved in cell signaling. This protein may function as a signaling adapter protein in lymphocytes.[provided by RefSeq, Sep 2009],





ELK Biotechnology



Western blot analysis of lysates from DU145 cells, primary antibody was diluted at 1:1000, 4° over night



+86-27-59760950

ELKbio@ELKbiotech.com

www.elkbiotech.com

23-2, No.388 Gaoxin 2nd Road, Wuhan East Lake Hi-tech Development Zone, Hubei, P.R.C.