



# RAB17 rabbit pAb

Cat No.:ES10113

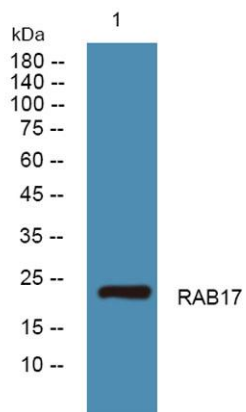
For research use only

## Overview

<b>Product Name</b>	RAB17 rabbit pAb
<b>Host species</b>	Rabbit
<b>Applications</b>	WB;ELISA
<b>Species Cross-Reactivity</b>	Human;Mouse
<b>Recommended dilutions</b>	WB 1:500-2000 ELISA 1:5000-20000
<b>Immunogen</b>	Synthesized peptide derived from human protein . at AA range: 50-130
<b>Specificity</b>	RAB17 Polyclonal Antibody detects endogenous levels of protein.
<b>Formulation</b>	Liquid in PBS containing 50% glycerol, 0.5% BSA and 0.02% sodium azide.
<b>Storage</b>	Store at -20°C. Avoid repeated freeze-thaw cycles.
<b>Protein Name</b>	Ras-related protein Rab-17
<b>Gene Name</b>	RAB17
<b>Cellular localization</b>	Recycling endosome membrane ; Lipid-anchor ; Cytoplasmic side . Melanosome . Cell projection, dendrite . May also localize at the basolateral and apical plasma membrane. In neurons, localizes to the cell body and dendritic shaft and spine. .
<b>Purification</b>	The antibody was affinity-purified from rabbit antiserum by affinity-chromatography using epitope-specific immunogen.
<b>Clonality</b>	Polyclonal
<b>Concentration</b>	1 mg/ml
<b>Observed band</b>	23kD
<b>Human Gene ID</b>	64284
<b>Human Swiss-Prot Number</b>	Q9H0T7
<b>Alternative Names</b>	
<b>Background</b>	The Rab subfamily of small GTPases plays an important role in the regulation of membrane trafficking. RAB17 is an epithelial cell-specific GTPase (Lutcke et al., 1993 [PubMed 8486736]).[supplied by OMIM, Oct 2009],



**ELK Biotechnology**



Western blot analysis of lysates from U2OS cells, primary antibody was diluted at 1:1000, 4° over night