



## RASF3 rabbit pAb

Cat No.:ES10098

For research use only

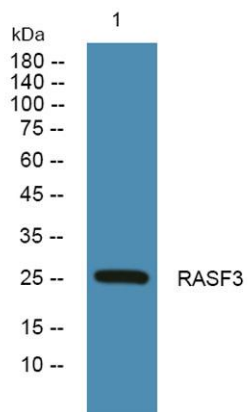
### Overview

---

<b>Product Name</b>	RASF3 rabbit pAb
<b>Host species</b>	Rabbit
<b>Applications</b>	WB;ELISA
<b>Species Cross-Reactivity</b>	Human;Mouse
<b>Recommended dilutions</b>	WB 1:500-2000 ELISA 1:5000-20000
<b>Immunogen</b>	Synthesized peptide derived from human protein . at AA range: 160-240
<b>Specificity</b>	RASF3 Polyclonal Antibody detects endogenous levels of protein.
<b>Formulation</b>	Liquid in PBS containing 50% glycerol, 0.5% BSA and 0.02% sodium azide.
<b>Storage</b>	Store at -20°C. Avoid repeated freeze-thaw cycles.
<b>Protein Name</b>	Ras association domain-containing protein 3
<b>Gene Name</b>	RASSF3
<b>Cellular localization</b>	Cytoplasm . Cytoplasm, cytoskeleton . Localized to microtubules in vascular endothelial cells.
<b>Purification</b>	The antibody was affinity-purified from rabbit antiserum by affinity-chromatography using epitope-specific immunogen.
<b>Clonality</b>	Polyclonal
<b>Concentration</b>	1 mg/ml
<b>Observed band</b>	26kD
<b>Human Gene ID</b>	283349
<b>Human Swiss-Prot Number</b>	Q86WH2
<b>Alternative Names</b>	
<b>Background</b>	The RAS oncogene (MIM 190020) is mutated in nearly one-third of all human cancers. Members of the RAS superfamily are plasma membrane GTP-binding proteins that modulate intracellular signal transduction pathways. A subfamily of RAS effectors, including RASSF3, share a RAS association (RA) domain.[supplied by OMIM, Jul 2003],



**ELK Biotechnology**



Western blot analysis of lysates from K562 cells, primary antibody was diluted at 1:1000, 4° over night