



ODPAT rabbit pAb

Cat No.:ES10076

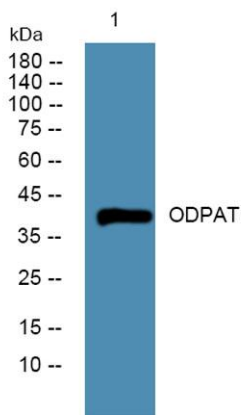
For research use only

Overview

Product Name	ODPAT rabbit pAb
Host species	Rabbit
Applications	WB;ELISA
Species Cross-Reactivity	Human;Rat;Mouse;
Recommended dilutions	WB 1:500-2000 ELISA 1:5000-20000
Immunogen	Synthesized peptide derived from human protein . at AA range: 310-390
Specificity	ODPAT Polyclonal Antibody detects endogenous levels of protein.
Formulation	Liquid in PBS containing 50% glycerol, 0.5% BSA and 0.02% sodium azide.
Storage	Store at -20°C. Avoid repeated freeze-thaw cycles.
Protein Name	Pyruvate dehydrogenase E1 component subunit alpha, testis-specific form, mitochondrial (EC 1.2.4.1) (PDHE1-A type II)
Gene Name	PDHA2 PDHAL
Cellular localization	Mitochondrion matrix.
Purification	The antibody was affinity-purified from rabbit antiserum by affinity-chromatography using epitope-specific immunogen.
Clonality	Polyclonal
Concentration	1 mg/ml
Observed band	42kD
Human Gene ID	5161
Human Swiss-Prot Number	P29803
Alternative Names	
Background	catalytic activity:Pyruvate + [dihydrolipoyllysine-residue acetyltransferase] lipoyllysine = [dihydrolipoyllysine-residue acetyltransferase] S-acetyldihydrolipoyllysine + CO(2).,cofactor:Thiamine pyrophosphate.,enzyme regulation:E1 activity is regulated by phosphorylation (inactivation) and



dephosphorylation (activation) of the alpha subunit.,function:The pyruvate dehydrogenase complex catalyzes the overall conversion of pyruvate to acetyl-CoA and CO(2). It contains multiple copies of three enzymatic components: pyruvate dehydrogenase (E1), dihydrolipoamide acetyltransferase (E2) and lipoamide dehydrogenase (E3).,subunit:Tetramer of 2 alpha and 2 beta subunits.,tissue specificity:Testis. Expressed in postmeiotic spermatogenic cells.,



Western blot analysis of lysates from HCT116 cells, primary antibody was diluted at 1:1000, 4° over night