



# UBE2W rabbit pAb

Cat No.:ES10051

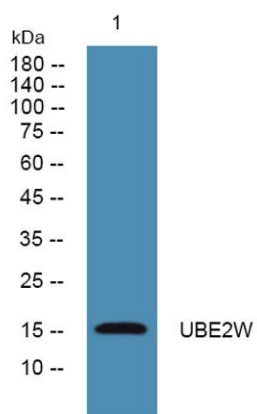
For research use only

## Overview

<b>Product Name</b>	UBE2W rabbit pAb
<b>Host species</b>	Rabbit
<b>Applications</b>	WB;ELISA
<b>Species Cross-Reactivity</b>	Human;Rat;Mouse
<b>Recommended dilutions</b>	WB 1:500-2000 ELISA 1:5000-20000
<b>Immunogen</b>	Synthesized peptide derived from human protein . at AA range: 90-170
<b>Specificity</b>	UBE2W Polyclonal Antibody detects endogenous levels of protein.
<b>Formulation</b>	Liquid in PBS containing 50% glycerol, 0.5% BSA and 0.02% sodium azide.
<b>Storage</b>	Store at -20°C. Avoid repeated freeze-thaw cycles.
<b>Protein Name</b>	Ubiquitin-conjugating enzyme E2 W (EC 6.3.2.19) (Ubiquitin carrier protein W) (Ubiquitin-conjugating enzyme 16) (UBC-16) (Ubiquitin-protein ligase W)
<b>Gene Name</b>	UBE2W UBC16
<b>Cellular localization</b>	Nucleus . In the nucleus, colocalizes with FANCL. .
<b>Purification</b>	The antibody was affinity-purified from rabbit antiserum by affinity-chromatography using epitope-specific immunogen.
<b>Clonality</b>	Polyclonal
<b>Concentration</b>	1 mg/ml
<b>Observed band</b>	16kD
<b>Human Gene ID</b>	55284
<b>Human Swiss-Prot Number</b>	Q96B02
<b>Alternative Names</b>	
<b>Background</b>	This gene encodes a nuclear-localized ubiquitin-conjugating enzyme (E2) that, along with ubiquitin-activating (E1) and ligating (E3) enzymes, coordinates the addition of a ubiquitin moiety to existing proteins. The encoded protein promotes the ubiquitination of Fanconi anemia complementation group proteins and may be important in the repair



of DNA damage. There is a pseudogene for this gene on chromosome 1. Alternative splicing results in multiple transcript variants. [provided by RefSeq, Aug 2012],



Western blot analysis of lysates from KB cells, primary antibody was diluted at 1:1000, 4° over night