



# ELK Biotechnology

Calreticulin Rabbit pAb

Catalog NO.: EA366

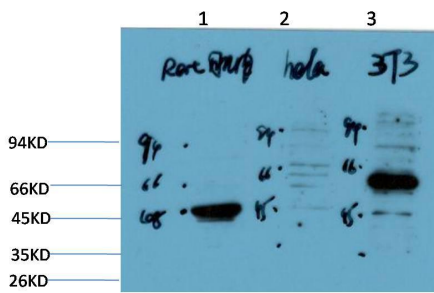
For research use only.

## Overview

---

Product name	Calreticulin Rabbit polyclonal antibody
Source	Rabbit
Applications	<b>WB</b>
Species reactivity	<b>Human, Mouse, Rat</b>
Recommended dilutions	<b>WesternBlot:1/500-1000</b> <b>NOTE: Optimal dilutions should be determined by the end user.</b>
Immunogen	Recombinant Protein
Species	Human
Storage	PBS with 0.02% sodium azide and 50% glycerol pH 7.4. Store at -20° C. Avoid repeated freeze-thaw cycles.
Isotype	IgG
Clonality	Polyclonal
Concentration	1 mg/ml
Observed band	<b>55kDa</b>
GeneID (Human)	811
Human Swiss-Prot No.	P27797
Cellular localization	Cytoplasm, Endoplasmic reticulum, Extracellular matrix, Sarcoplasmic reticulum, Secreted
Alternative Names	CALR, Calregulin, cC1qR, CRP55, CRT, CRTC, ERp60, grp60, HACBP, RO, SSA
Background	Calcium is a universal signaling molecule involved in many cellular functions such as cell motility, metabolism, protein modification, protein folding, and apoptosis. Calcium is stored in the endoplasmic reticulum (ER), where it is buffered by calcium binding chaperones such as calnexin and calreticulin, and is released via the IP3 Receptor channel . Calreticulin also functions as an ER chaperone that ensures proper folding and quality

control of newly synthesized glycoproteins. As such, calreticulin presumably does not alter protein folding but regulates proper timing for efficient folding and subunit assembly. Furthermore, calreticulin retains proteins in non-native conformation within the ER and targets them for degradation .



Western blot analysis of 1) Rat Skeletal Muscle Tissue Lysate, 2) HeLa Cell Lysate , 3) 3T3 Cell Lysate using Calreticulin ( EA366 ) Rabbit pAb diluted at 1:1000.