



ELK Biotechnology

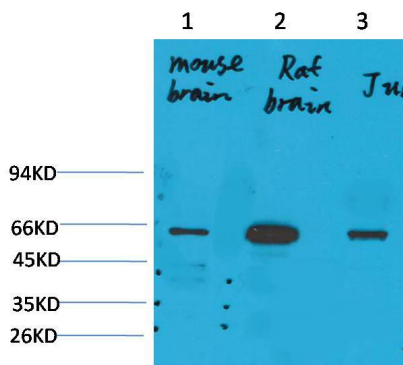
KCNK10(TREK-2) Rabbit pAb

Catalog NO.: EA294

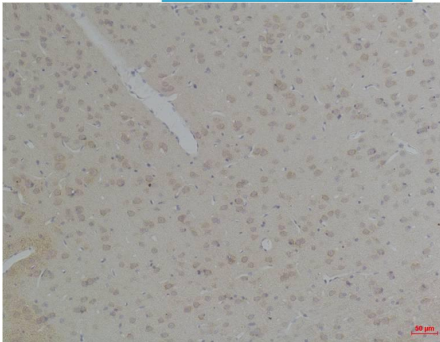
For research use only.

Overview

Product name	KCNK10(TREK-2) Rabbit polyclonal antibody
Source	Rabbit
Applications	WB, IHC
Species reactivity	Human, Rat, Mouse
Recommended dilutions	WesternBlot:1/1000-2000 Immunohistochemistry:1/100-200 NOTE: Optimal dilutions should be determined by the end user.
Immunogen	Synthetic Peptide
Species	Human
Storage	PBS with 0.02% sodium azide and 50% glycerol pH 7.4. Store at -20° C. Avoid repeated freeze-thaw cycles.
Isotype	IgG
Clonality	Polyclonal
Concentration	1 mg/ml
Observed band	59kDa
GenelD (Human)	54207
Human Swiss-Prot No.	P57789
Cellular localization	Membrane
Alternative Names	K2p10.1,KCNKA,Potassium channel subfamily K member 10
Background	Outward rectifying potassium channel. Produces rapidly activating and non-inactivating outward rectifier K(+) currents. Activated by arachidonic acid and other naturally occurring unsaturated free fatty acids.



Western blot analysis of 1) Mouse BrainTissue, 2)Rat Brain Tissue , 3) Jurkat with KCNK10(TREK-2) Rabbit pAb EA294 diluted at 1:2,000.



Immunohistochemical analysis of paraffin-embedded Rat BrainTissue using KCNK10 (TREK-2) (EA294) Rabbit pAb diluted at 1:200.