



# ELK Biotechnology

**GABA A Receptor  $\alpha$  2 Rabbit pAb**

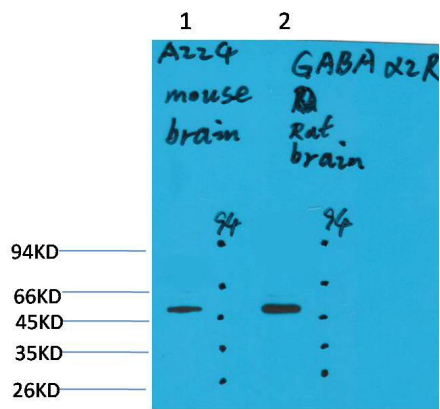
**Catalog NO.: EA285**

**For research use only.**

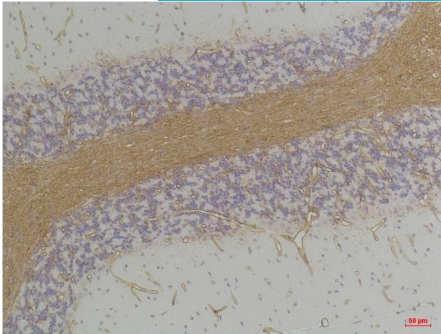
## Overview

---

Product name	GABA A Receptor $\alpha$ 2 Rabbit polyclonal antibody
Source	Rabbit
Applications	<b>WB, IHC</b>
Species reactivity	<b>Human, Rat, Mouse</b>
Recommended dilutions	<b>WesternBlot:1/1000-2000</b> <b>Immunohistochemistry:1/100-200</b> <b>NOTE: Optimal dilutions should be determined by the end user.</b>
Immunogen	Synthetic Peptide
Species	Human
Storage	PBS with 0.02% sodium azide and 50% glycerol pH 7.4. Store at -20° C. Avoid repeated freeze-thaw cycles.
Isotype	IgG
Clonality	Polyclonal
Concentration	1 mg/ml
Observed band	<b>51kDa</b>
GeneID (Human)	282236
Human Swiss-Prot No.	P47869
Cellular localization	Cell junction, Cell membrane, Cytoplasmic vesicle, Membrane, Postsynaptic cell membrane, Synapse
Alternative Names	GABA, GABRA2,GBRA2, GABA A receptor subunit alpha 2
Background	GABA, the major inhibitory neurotransmitter in the vertebrate brain, mediates neuronal inhibition by binding to the GABA/benzodiazepine receptor and opening an integral chloride channel.



Western blot analysis of 1) Mouse Brain Tissue, 2) Rat Brain Tissue with GABA A Receptor  $\alpha 2$  Rabbit pAb EA285 diluted at 1:2,000.



Immunohistochemical analysis of paraffin-embedded Rat Brain Tissue using GABA A Receptor  $\alpha 2$  (EA285) Rabbit pAb diluted at 1:200.