



ELK Biotechnology

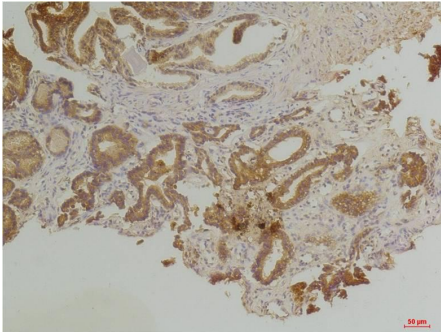
Endothelin B Receptor Rabbit pAb

Catalog NO.: EA282

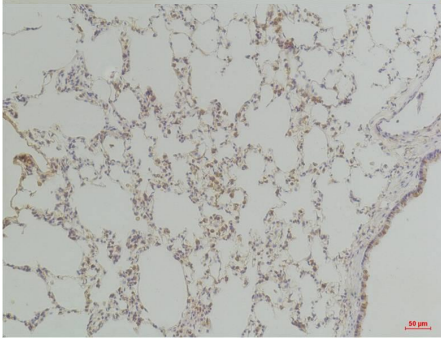
For research use only.

Overview

Product name	Endothelin B Receptor Rabbit polyclonal antibody
Source	Rabbit
Applications	IHC
Species reactivity	Human, Rat, Mouse
Recommended dilutions	Immunohistochemistry:1/100-200 NOTE: Optimal dilutions should be determined by the end user.
Immunogen	Synthetic Peptide
Species	Human
Storage	PBS with 0.02% sodium azide and 50% glycerol pH 7.4. Store at -20° C. Avoid repeated freeze-thaw cycles.
Isotype	IgG
Clonality	Polyclonal
Concentration	1 mg/ml
Observed band	50kDa
GeneID (Human)	1910
Human Swiss-Prot No.	P24530
Cellular localization	Cell membrane
Alternative Names	ABCDS,Ednra,EDNRB,ET-B,ET-BR,HSCR2,WS4A
Background	N/A



Immunohistochemical analysis of paraffin-embedded Human Prostate Tissue using Endothelin B Receptor (EA282) Rabbit pAb diluted at 1:200.



Immunohistochemical analysis of paraffin-embedded Rat Lung Tissue using Endothelin B Receptor (EA282) Rabbit pAb diluted at 1:200.