

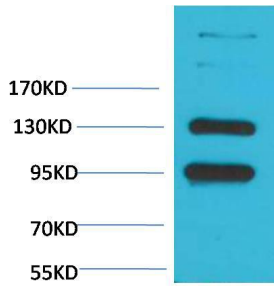


ELK Biotechnology

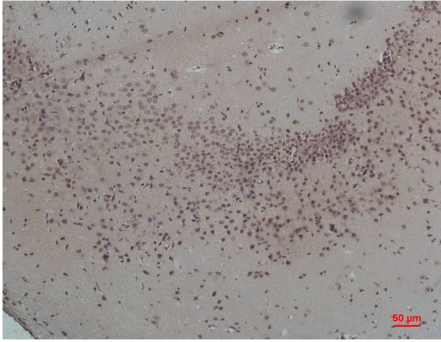
CaV α 2 δ 1 Rabbit pAb
Catalog NO.: EA267
For research use only.

Overview

Product name	CaV α 2 δ 1 Rabbit polyclonal antibody
Source	Rabbit
Applications	WB, IHC
Species reactivity	Rat
Recommended dilutions	WesternBlot:1/1000-2000 Immunohistochemistry:1/100-200 NOTE: Optimal dilutions should be determined by the end user.
Immunogen	Synthetic Peptide
Species	Human
Storage	PBS with 0.02% sodium azide and 50% glycerol pH 7.4. Store at -20° C. Avoid repeated freeze-thaw cycles.
Isotype	IgG
Clonality	Polyclonal
Concentration	1 mg/ml
Observed band	100-130kDa
GeneID (Human)	781
Human Swiss-Prot No.	P54289
Cellular localization	Membrane
Alternative Names	α 2/ δ Subunit of Voltage-Gated Ca ²⁺ Channel, α 2 Subunit antibody, Cacna2d1 antibody, Calcium channel L type DHPR alpha 2 subunit antibody
Background	Voltage-gated Ca ²⁺ channels (CaV), enable the passage of Ca ²⁺ ions in a voltage dependent manner. These heteromeric entities are formed in part by the pore-forming α 1 subunit which determines the biophysical and pharmacological properties of the channel.



Western blot analysis of Rat Brain Tissue with CaVα2δ1 Rabbit pAb EA267 diluted at 1:2,000.



Immunohistochemical analysis of paraffin-embedded Rat Brain Tissue using CaV α2δ1 (EA267) Rabbit pAb diluted at 1:200.