



ELK Biotechnology

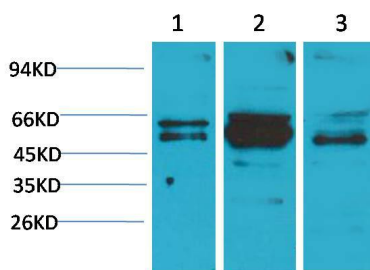
Flotillin-2 Rabbit pAb

Catalog NO.: EA257

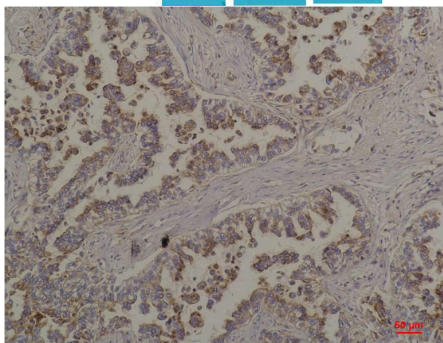
For research use only.

Overview

Product name	Flotillin-2 Rabbit polyclonal antibody
Source	Rabbit
Applications	WB, IHC
Species reactivity	Human, Rat, Mouse
Recommended dilutions	WesternBlot:1/1000-2000 Immunohistochemistry:1/50-100 NOTE: Optimal dilutions should be determined by the end user.
Immunogen	Recombinant Protein
Species	Human
Storage	PBS with 0.02% sodium azide and 50% glycerol pH 7.4. Store at -20° C. Avoid repeated freeze-thaw cycles.
Isotype	IgG
Clonality	Polyclonal
Concentration	1 mg/ml
Observed band	49,58kDa
GenelD (Human)	2319
Human Swiss-Prot No.	Q14254
Cellular localization	Cell membrane, Endosome, Membrane
Alternative Names	ECS-1 antibody, ESA antibody, FLOT2 antibody, M17S1 antibody, REG-1 antibody, Reggie-1 antibody
Background	Flotillins belong to a family of lipid raft-associated integral membrane proteins that carry a evolutionarily conserved domain called the prohibitin homology domain. May act as a scaffolding protein within caveolar membranes, functionally participating in formation of caveolae or caveolae-like vesicles.



Western blot analysis of 1) A431, 2) Mouse Brain Tissue, 3) Rat Brain Tissue with Flotillin-2 Rabbit pAb EA257 diluted at 1:2,000.



Immunohistochemical analysis of paraffin-embedded Human Lung Carcinoma using Flotillin-2 (EA257) Rabbit pAb diluted at 1:200.