



ELK Biotechnology

Akt1 Rabbit pAb

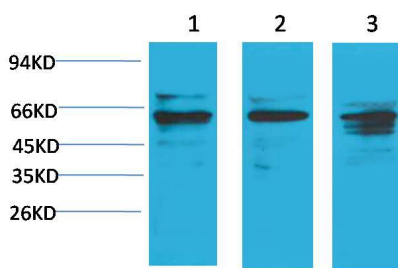
Catalog NO.: EA243

For research use only.

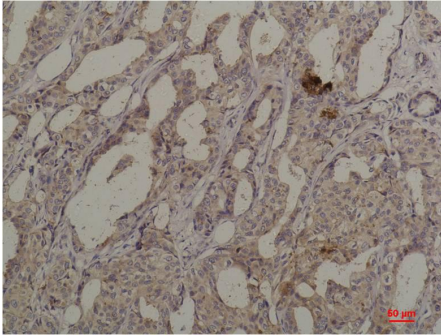
Overview

Product name	Akt1 Rabbit polyclonal antibody
Source	Rabbit
Applications	WB, IHC
Species reactivity	Human, Rat, Mouse
Recommended dilutions	WesternBlot:1/1000-2000 Immunohistochemistry:1/100-200 NOTE: Optimal dilutions should be determined by the end user.
Immunogen	Recombinant Protein
Species	Human
Storage	PBS with 0.02% sodium azide and 50% glycerol pH 7.4. Store at -20° C. Avoid repeated freeze-thaw cycles.
Isotype	IgG
Clonality	Polyclonal
Concentration	1 mg/ml
Observed band	60kDa
GenelD (Human)	207
Human Swiss-Prot No.	P31749
Cellular localization	Cytoplasm,Nucleus,Cell membrane
Alternative Names	c Akt antibody, MGC9965 antibody, Protein kinase B antibody, RAC antibody, PRKBA antibody
Background	Akt, is a serine/threonine-specific protein kinase that plays a key role in multiple cellular processes such as glucose metabolism, apoptosis, cell proliferation, transcription and cell migration. Akt1 is involved in cellular survival pathways, by inhibiting apoptotic processes. Akt1 is also able to induce protein synthesis pathways, and is therefore a key signaling protein in the cellular pathways that lead to skeletal muscle hypertrophy, and

general tissue growth.



Western blot analysis of 1) HeLa, 2) 3T3, 3) PC12 with Akt1 Rabbit pAb EA243 diluted at 1:2,000.



Immunohistochemical analysis of paraffin-embedded Human Breast Carcinoma using Akt1 (EA243) Rabbit pAb diluted at 1:200.