



ELK Biotechnology

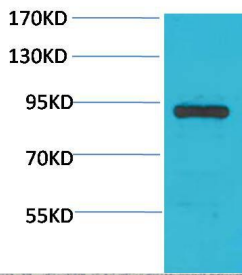
STAT4 Rabbit pAb

Catalog NO.: EA238

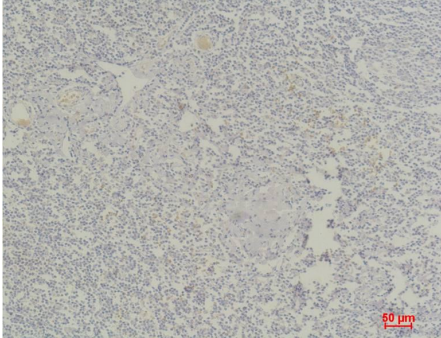
For research use only.

Overview

| | |
|-----------------------|--|
| Product name | STAT4 Rabbit polyclonal antibody |
| Source | Rabbit |
| Applications | WB, IHC |
| Species reactivity | Human |
| Recommended dilutions | WesternBlot:1/1000-2000 Immunohistochemistry:1/100-200 NOTE: Optimal dilutions should be determined by the end user. |
| Immunogen | Recombinant Protein |
| Species | Human |
| Storage | PBS with 0.02% sodium azide and 50% glycerol pH 7.4. Store at -20° C. Avoid repeated freeze-thaw cycles. |
| Isotype | IgG |
| Clonality | Polyclonal |
| Concentration | 1 mg/ml |
| Observed band | 86kDa |
| GeneID (Human) | 6775 |
| Human Swiss-Prot No. | Q14765 |
| Cellular localization | Cytoplasm, Nucleus |
| Alternative Names | SLEB11 antibody, signal transducer and activator of transcription 4 antibody |
| Background | STAT4 is a transcription factor belonging to the Signal Transducer and Activator of Transcription protein family. It is required for the development of Th1 cells from naive CD4+ T cells and IFN- γ production in response to IL-12. |



Western blot analysis of Hela with STAT4 Rabbit pAb EA238 diluted at 1:2,000.



Immunohistochemical analysis of paraffin-embedded Human Tonsil Tissue using STAT4 (EA238) Rabbit pAb diluted at 1:200.