



ELK Biotechnology

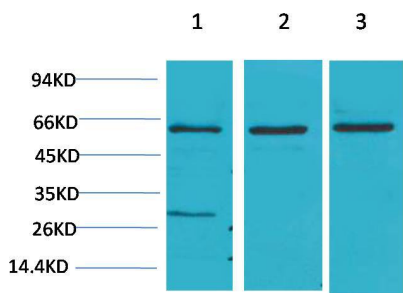
Akt2 Rabbit pAb

Catalog NO.: EA235

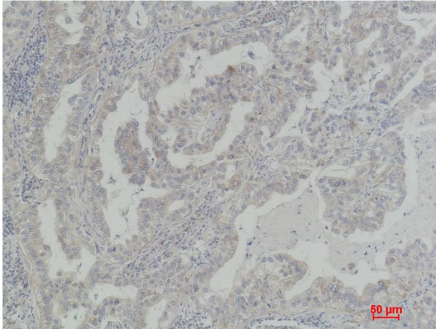
For research use only.

Overview

Product name	Akt2 Rabbit polyclonal antibody
Source	Rabbit
Applications	WB, IHC
Species reactivity	Human, Rat, Mouse
Recommended dilutions	WesternBlot:1/500-1000 Immunohistochemistry:1/100-200 NOTE: Optimal dilutions should be determined by the end user.
Immunogen	Recombinant Protein
Species	Human
Storage	PBS with 0.02% sodium azide and 50% glycerol pH 7.4. Store at -20° C. Avoid repeated freeze-thaw cycles.
Isotype	IgG
Clonality	Polyclonal
Concentration	1 mg/ml
Observed band	60kDa
GeneID (Human)	208
Human Swiss-Prot No.	P31751
Cellular localization	Cell membrane, Cytoplasm, Endosome, Membrane, Nucleus
Alternative Names	PKB antibody, PKB beta antibody, PKBB antibody, RAC beta antibody, RAC-PK-beta antibody
Background	RAC-beta serine/threonine-protein kinase is an enzyme that in humans is encoded by the AKT2 gene. This gene is a putative oncogene encoding a protein belonging to the AKT subfamily of serine/threonine kinases that contain SH2-like (Src homology 2-like) domains. The encoded protein is a general protein kinase capable of phosphorylating several known proteins.



Western blot analysis of 1) HeLa, 2)3T3, 3)PC12 with Akt2 Rabbit pAb EA235 diluted at 1:2,000.



Immunohistochemical analysis of paraffin-embedded Human Lung Carcinoma using Akt2 (EA235) Rabbit pAb diluted at 1:200.