



## ELK Biotechnology

HSP90  $\alpha$  Rabbit pAb

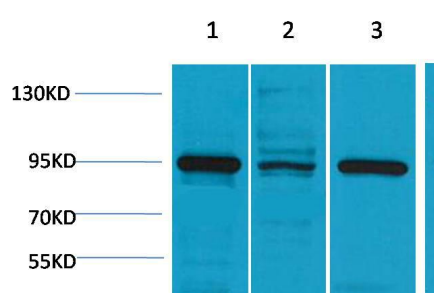
Catalog NO.: EA153

For research use only.

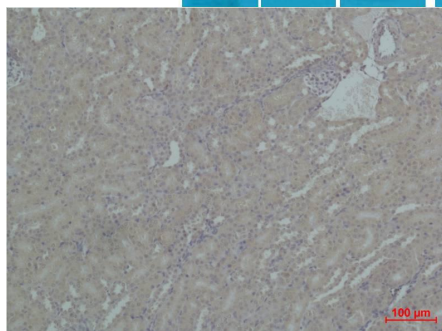
### Overview

---

Product name	HSP90 $\alpha$ Rabbit polyclonal antibody
Source	Rabbit
Applications	WB, IHC
Species reactivity	Human, Rat, Mouse
Recommended dilutions	WesternBlot:1/1000-2000 Immunohistochemistry:1/200-500 NOTE: Optimal dilutions should be determined by the end user.
Immunogen	Recombinant Protein
Species	Human
Storage	PBS with 0.02% sodium azide and 50% glycerol pH 7.4. Store at -20° C. Avoid repeated freeze-thaw cycles.
Isotype	IgG
Clonality	Polyclonal
Concentration	1 mg/ml
Observed band	95kDa
GeneID (Human)	3320
Human Swiss-Prot No.	P07900
Cellular localization	Cell membrane, Cytoplasm, Membrane, Nucleus
Alternative Names	Heat shock protein 90kDa alpha, HSP 90A, HSPC1, HSPCA, HSPN, LAP2, HSP86, HSP89
Background	Hsp90 (heat shock protein 90) is a chaperone protein that assists other proteins to fold properly, stabilizes proteins against heat stress, and aids in protein degradation. In mammalian cells, there are two or more genes encoding cytosolic Hsp90 homologues, with the human Hsp90 $\alpha$ showing 85% sequence identity to Hsp90 $\beta$ .



Western blot analysis of 1) HeLa, 2)3T3, 3)Mouse Brain, 4) Rat Brain, with HSP90  $\alpha$  Rabbit pAb EA153 diluted at 1:2,000.



Immunohistochemical analysis of paraffin-embedded Mouse Kidney Tissue using HSP90 $\alpha$  (EA153) Rabbit pAb diluted at 1:500.