



# ELK Biotechnology

$\alpha$  -Skeletal Muscle Actin Rabbit pAb

Catalog NO.: EA047

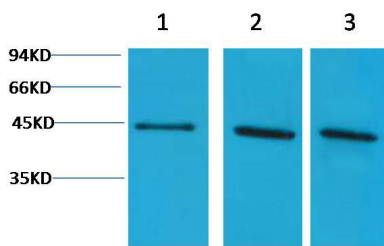
For research use only.

## Overview

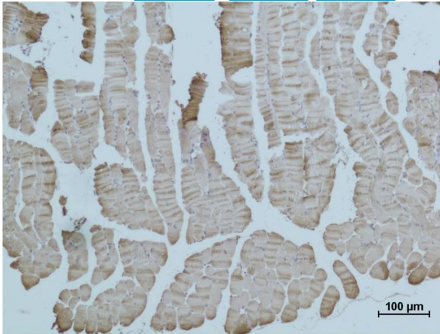
---

Product name	$\alpha$ -Skeletal Muscle Actin Rabbit polyclonal antibody
Source	Rabbit
Applications	WB, IHC
Species reactivity	Human, Rat, Mouse
Recommended dilutions	WesternBlot:1/1000-2000 Immunohistochemistry:1/200-500 <b>NOTE: Optimal dilutions should be determined by the end user.</b>
Immunogen	Synthetic Peptide
Species	Human
Storage	PBS with 0.02% sodium azide and 50% glycerol pH 7.4. Store at -20° C. Avoid repeated freeze-thaw cycles.
Isotype	IgG
Clonality	Polyclonal
Concentration	1 mg/ml
Observed band	<b>42kDa</b>
GeneID (Human)	58
Human Swiss-Prot No.	P68133
Cellular localization	Cytoplasm,Cytoskeleton
Alternative Names	ACTA antibody, ACTA1 antibody, ACTC antibody, ACTC1 antibody, Actin alpha cardiac muscle antibody, ACTS antibody, Alpha actin 1 antibody, Cardiac muscle alpha actin 1 antibody, Skeletal muscle alpha actin 1 antibody
Background	Actin, alpha skeletal muscle is a protein that in humans is encoded by the ACTA1 gene. Actin alpha 1 which is expressed in skeletal muscle is one of six different actin isoforms which have been identified. Actins are highly conserved proteins that are involved in cell motility, structure and integrity.

Alpha actins are a major constituent of the contractile apparatus.



Western blot analysis of 1) Hela, 2)3T3, 3) Rat Kidney tissue with EA047 diluted at 1:2,000.



Immunohistochemical analysis of paraffin-embedded Mouse Skeletal Muscle Tissue using  $\alpha$  skeletal muscle actin (EA047) Rabbit pAb diluted at 1:500.