



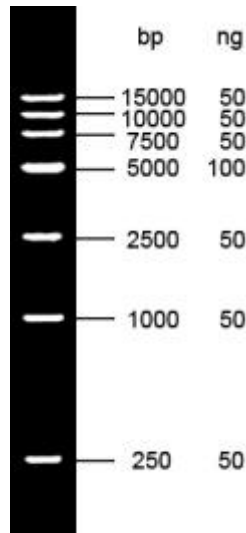
ELK Biotechnology
For research use only.

DL15000 DNA Marker

Catalog No	Specification	Storage/Shelflife
EDL103-01	250 μ l	-20C°/2 years
EDL103-02	500 μ l	-20C°/2 years

Introduction

DL15,000 bp Ladder DNA Marker is composed of 7 kinds of DNA fragments with a length of 250 bp to 150,000 bp, dissolved in 1 \times Loading Buffer, and can be used for direct electrophoresis of 5-10 μ l during use, which is very convenient to use.



Note

1. When the width of the sample well during electrophoresis is less than 5 mm, a clear band can be obtained by taking 5 μ l Marker electrophoresis each time. If the sample hole is widened, the sampler volume of Marker must be increased appropriately.
2. For DNA electrophoresis, the purity of Agarose greatly affects the clarity of DNA bands. Therefore, the best quality Agarose should be used for electrophoresis. The recommended gel concentration is 0.8% to 1%.
3. When performing Agarose electrophoresis, the concentration of Agarose is closely related to the separation performance of DNA fragments. The greater the concentration of Agarose, the better the separation performance of short DNA; conversely, the smaller the concentration of Agarose, the more favorable for the separation of long DNA.