



NEDD4L (phospho-Ser448) rabbit pAb

Cat No.:ES14529

For research use only

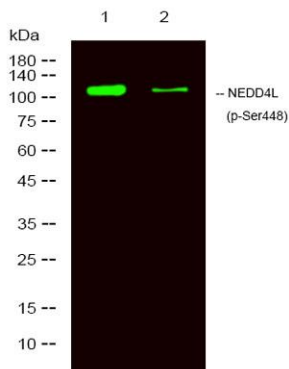
Overview

Product Name	NEDD4L (phospho-Ser448) rabbit pAb
Host species	Rabbit
Applications	WB
Species Cross-Reactivity	Human;Rat;Mouse;
Recommended dilutions	WB 1:1000-2000
Immunogen	Synthesized phospho peptide around human NEDD4L (Ser448)
Specificity	This antibody detects endogenous levels of Human NEDD4L (phospho-Ser448)
Formulation	Liquid in PBS containing 50% glycerol, 0.5% BSA and 0.02% sodium azide.
Storage	Store at -20°C. Avoid repeated freeze-thaw cycles.
Protein Name	NEDD4L (Ser448)
Gene Name	NEDD4L KIAA0439 NEDL3
Cellular localization	Cytoplasm . Golgi apparatus . Endosome, multivesicular body . May be recruited to exosomes by NDFIP1.
Purification	The antibody was affinity-purified from rabbit antiserum by affinity-chromatography using epitope-specific immunogen.
Clonality	Polyclonal
Concentration	1 mg/ml
Observed band	110-120kD
Human Gene ID	23327
Human Swiss-Prot Number	Q96PU5
Alternative Names	E3 ubiquitin-protein ligase NEDD4-like (EC 6.3.2.-) (NEDD4.2) (Nedd4-2)
Background	This gene encodes a member of the Nedd4 family of HECT domain E3 ubiquitin ligases. HECT domain E3 ubiquitin ligases transfer ubiquitin from E2 ubiquitin-conjugating enzymes to protein substrates, thus targeting specific proteins for lysosomal degradation. The encoded protein mediates the





ubiquitination of multiple target substrates and plays a critical role in epithelial sodium transport by regulating the cell surface expression of the epithelial sodium channel, ENaC. Single nucleotide polymorphisms in this gene may be associated with essential hypertension. Alternatively spliced transcript variants encoding multiple isoforms have been observed for this gene. [provided by RefSeq, Mar 2012],



Western Blot analysis of 1 HeLa treated with LPS, 2 HeLa, using primary antibody at 1:1000 dilution. Secondary antibody (catalog#:RS23920) was diluted at 1:10000

