



# NF-E4 rabbit pAb

Cat No.:ES14508

For research use only

## Overview

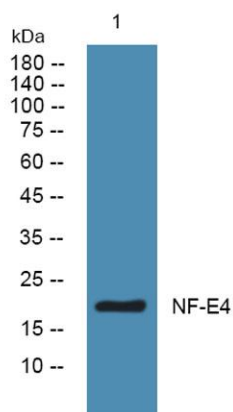
<b>Product Name</b>	NF-E4 rabbit pAb
<b>Host species</b>	Rabbit
<b>Applications</b>	IHC;IF;WB
<b>Species Cross-Reactivity</b>	Human;Rat;Mouse;
<b>Recommended dilutions</b>	IHC-p 1:50-200, WB 1:500-2000
<b>Immunogen</b>	Synthesized peptide derived from human NF-E4
<b>Specificity</b>	This antibody detects endogenous levels of human NF-E4
<b>Formulation</b>	Liquid in PBS containing 50% glycerol, 0.5% BSA and 0.02% sodium azide.
<b>Storage</b>	Store at -20°C. Avoid repeated freeze-thaw cycles.
<b>Protein Name</b>	NF-E4
<b>Gene Name</b>	NFE4
<b>Cellular localization</b>	Nucleus .
<b>Purification</b>	The antibody was affinity-purified from rabbit antiserum by affinity-chromatography using epitope-specific immunogen.
<b>Clonality</b>	Polyclonal
<b>Concentration</b>	1 mg/ml
<b>Observed band</b>	19kD
<b>Human Gene ID</b>	58160
<b>Human Swiss-Prot Number</b>	Q86UQ8
<b>Alternative Names</b>	Transcription factor NF-E4
<b>Background</b>	The erythroid-specific protein encoded by this gene, and the ubiquitous transcription factor CP2, form the stage selector protein (SSP) complex, which is involved in preferential expression of the gamma-globin genes in fetal erythroid cells. Alternate use of an in-frame upstream non-AUG (CUG) translation initiation codon, and a downstream AUG codon, results in two isoforms. While the long isoform (22 kDa) acts as an activator, the short isoform (14 kDa) has been shown to





repress gamma-globin gene expression. This gene is located in an intron of the FBXL13 gene on the opposite strand. [provided by RefSeq, Jul 2008],

Western blot analysis of lysates from K562 cells, primary antibody was diluted at 1:1000, 4° over night



Immunohistochemical analysis of paraffin-embedded human tonsil. 1, Antibody was diluted at 1:200(4° overnight). 2, Tris-EDTA,pH9.0 was used for antigen retrieval. 3,Secondary antibody was diluted at 1:200(room temperature, 45min).

