



ELK Biotechnology

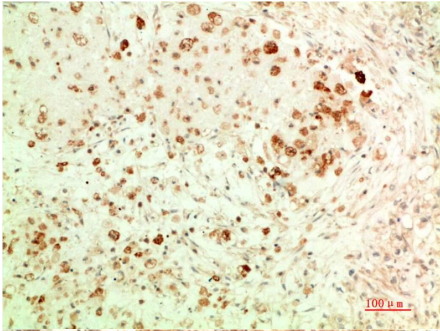
ATG5 (3C7) Mouse mAb

Catalog NO.: EM1374

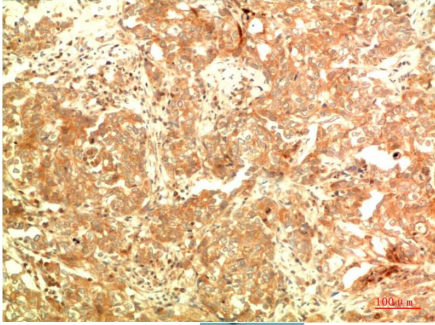
For research use only.

Overview

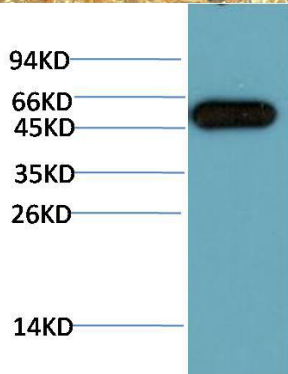
Product name	ATG5 (3C7) Mouse Monoclonal antibody
Source	Mouse
Applications	WB IHC
Species reactivity	Human Mouse Rat
Recommended dilutions	WesternBlot:1/5000-10000 Immunohistochemistry:1/100-200 NOTE: Optimal dilutions should be determined by the end user.
Immunogen	Recombinant Protein
Species	Human
Storage	PBS with 0.02% sodium azide and 50% glycerol pH 7.4. Store at -20° C. Avoid repeated freeze-thaw cycles.
Isotype	IgG1
Clonality	Monoclonal
Concentration	1 mg/ml
Observed band	55kDa
GeneID (Human)	9494
Human Swiss-Prot No.	Q9H1Y0
Cellular localization	Cytoplasm Membrane
Alternative Names	APG5 APG5L ASP Autophagy protein 5 antibody
Background	Autophagy is generally activated by conditions of nutrient deprivation but has also been associated with a number of physiological processes including development differentiation neurodegeneration infection and cancer. Formation of the autophagosome involves a ubiquitin-like conjugation system in which Atg12 is covalently bound to Atg5 and targeted to autophagosome vesicles. This conjugation reaction is mediated by the ubiquitin E1-like enzyme Atg7 and the E2-like enzyme Atg10.



Immunohistochemical analysis of paraffin-embedded Human Ovarian Carcinoma Tissue using ATG5 (EM1374) Mouse mAb diluted at:200.



Immunohistochemical analysis of paraffin-embedded Human Breast Carcinoma Tissue using ATG5 (EM1374) Mouse mAb diluted at:200.



Western blot analysis of HeLa Cell Lysate using ATG5 (EM1374) Mouse mAb diluted at:10000.